

PROVISIONAL EU+EFTA¹ COUNTRIES NEW REGISTRATION FIGURES BY MARKET NEW LIGHT COMMERCIAL VEHICLES up to 3.5t²

21/10/16

	September '16	September '15	% Change	Jan-Sep '16	Jan-Sep '15	% Change
AUSTRIA	2.870	2.989	-4,0%	27.671	24.545	12,7%
BELGIUM	5.372	4.509	19,1%	52.796	47.230	11,8%
BULGARIA	366	411	-10,9%	3.386	3.321	2,0%
CROATIA	612	535	14,4%	6.251	4.932	26,7%
CYPRUS	180	209	-13,9%	1.392	1.046	33,1%
CZECH REPUBLIC	1.634	1.256	30,1%	14.185	11.762	20,6%
DENMARK	2.703	2.720	-0,6%	27.866	23.435	18,9%
ESTONIA	319	364	-12,4%	3.035	2.760	10,0%
FINLAND	1.169	957	22,2%	9.946	8.486	17,2%
FRANCE	35.326	36.077	-2,1%	298.744	272.148	9,8%
GERMANY	20.276	19.196	5,6%	189.795	168.100	12,9%
GREECE	394	364	8,2%	4.208	4.193	0,4%
HUNGARY	1.661	1.313	26,5%	15.468	11.769	31,4%
IRELAND	1.628	1.582	2,9%	26.165	21.770	20,2%
ITALY	16.460	11.249	46,3%	130.592	92.306	41,5%
LATVIA	186	171	8,8%	1.604	1.709	-6,1%
LITHUANIA	240	192	25,0%	2.196	1.695	29,6%
LUXEMBOURG	276	281	-1,8%	3.269	2.769	18,1%
NETHERLANDS	5.296	4.804	10,2%	55.450	45.014	23,2%
POLAND	4.732	4.762	-0,6%	44.375	36.969	20,0%
PORTUGAL	2.984	2.557	16,7%	24.599	21.327	15,3%
ROMANIA	1.488	972	53,1%	10.380	7.681	35,1%
SLOVAKIA	425	639	-33,5%	5.646	4.914	14,9%
SLOVENIA	778	617	26,1%	7.100	5.281	34,4%
SPAIN	13.529	12.063	12,2%	126.692	112.162	13,0%
SWEDEN	4.654	4.054	14,8%	38.132	32.234	18,3%
UNITED KINGDOM	59.857	58.744	1,9%	291.714	284.161	2,7%
EUROPEAN UNION	185.415	173.587	6,8%	1.422.657	1.253.719	13,5%
EU15³	172.794	162.146	6,6%	1.307.639	1.159.880	12,7%
EU12⁴	12.621	11.441	10,3%	115.018	93.839	22,6%
ICELAND	118	105	12,4%	1.371	1.077	27,3%
NORWAY	2.843	2.450	16,0%	24.380	22.865	6,6%
SWITZERLAND	2.528	2.543	-0,6%	22.921	23.299	-1,6%
EFTA	5.489	5.098	7,7%	48.672	47.241	3,0%
EU+EFTA	190.904	178.685	6,8%	1.471.329	1.300.960	13,1%
WESTERN EUROPE (EU15+EFTA)	178.283	167.244	6,6%	1.356.311	1.207.121	12,4%

SOURCE: NATIONAL AUTOMOBILE MANUFACTURERS' ASSOCIATIONS

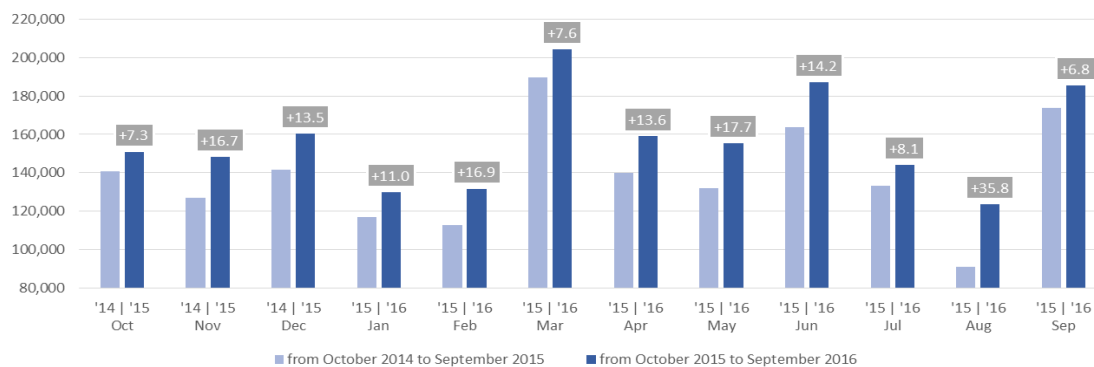
¹ Data for Malta unavailable

³ Member States before the 2004 enlargement

² Including Light Buses & Coaches

⁴ Member States having joined the EU since 2004

New light commercial vehicle registrations in the EU - 12 month trend



PROVISIONAL EU+EFTA¹ COUNTRIES NEW REGISTRATION FIGURES BY MARKET NEW HEAVY COMMERCIAL VEHICLES of 16t and over²

21/10/16

	September '16	September '15	% Change	Jan-Sep '16	Jan-Sep '15	% Change
AUSTRIA	629	584	7,7%	5.841	5.284	10,5%
BELGIUM	891	719	23,9%	6.472	5.344	21,1%
BULGARIA	N/A	N/A	N/A	N/A	N/A	N/A
CROATIA	64	65	-1,5%	827	602	37,4%
CYPRUS	3	2	50,0%	28	18	55,6%
CZECH REPUBLIC ³	929	873	6,4%	6.990	6.259	11,7%
DENMARK	458	410	11,7%	3.388	3.202	5,8%
ESTONIA	94	81	16,0%	683	547	24,9%
FINLAND	227	183	24,0%	1.970	1.605	22,7%
FRANCE	3.853	3.478	10,8%	30.683	26.413	16,2%
GERMANY	5.471	5.179	5,6%	49.709	46.032	8,0%
GREECE	8	12	-33,3%	165	153	7,8%
HUNGARY	320	417	-23,3%	3.348	3.534	-5,3%
IRELAND ⁴	159	122	30,3%	1.953	1.316	48,4%
ITALY ⁵	1.270	923	37,6%	12.167	8.852	37,4%
LATVIA	123	90	36,7%	1.105	942	17,3%
LITHUANIA ⁴	565	574	-1,6%	4.808	2.712	77,3%
LUXEMBOURG ⁴	115	101	13,9%	907	772	17,5%
NETHERLANDS	1.235	1.102	12,1%	11.141	9.658	15,4%
POLAND	2.311	2.061	12,1%	17.852	14.091	26,7%
PORTUGAL	429	354	21,2%	2.798	2.312	21,0%
ROMANIA	550	476	15,5%	5.504	3.911	40,7%
SLOVAKIA	369	435	-15,2%	3.124	3.089	1,1%
SLOVENIA ⁴	199	140	42,1%	1.626	1.231	32,1%
SPAIN	1.871	1.535	21,9%	13.670	12.390	10,3%
SWEDEN	581	444	30,9%	4.177	3.384	23,4%
UNITED KINGDOM ⁴	3.165	4.811	-34,2%	24.559	25.198	-2,5%
EUROPEAN UNION	25.889	25.171	2,9%	215.495	188.851	14,1%
EU15	20.362	19.957	2,0%	169.600	151.915	11,6%
EU12	5.527	5.214	6,0%	45.895	36.936	24,3%
ICELAND	3	14	-78,6%	111	93	19,4%
NORWAY ⁴	429	363	18,2%	3.280	2.967	10,5%
SWITZERLAND ³	243	251	-3,2%	2.470	2.399	3,0%
EFTA	675	628	7,5%	5.861	5.459	7,4%
EU+EFTA	26.564	25.799	3,0%	221.356	194.310	13,9%
WESTERN EUROPE (EU15+EFTA)	21.037	20.585	2,2%	175.461	157.374	11,5%

SOURCE: NATIONAL AUTOMOBILE MANUFACTURERS' ASSOCIATIONS

¹ Data for Malta unavailable

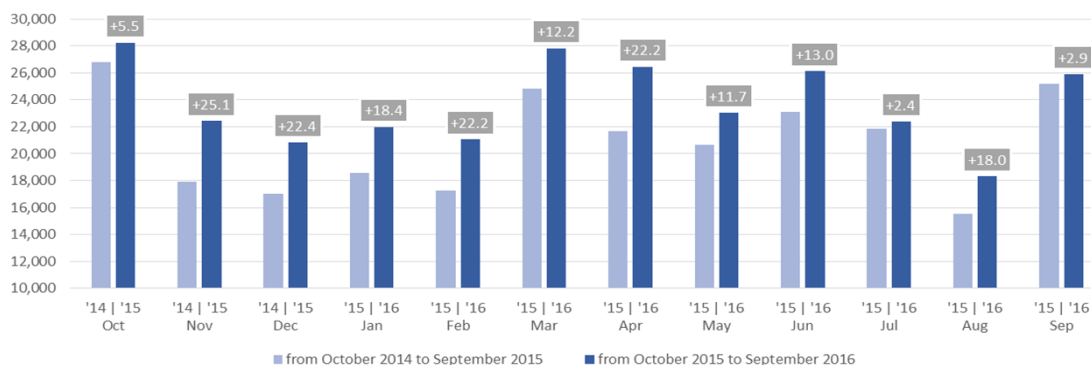
⁴ Estimates

² Excluding Heavy Buses & Coaches

⁵ ANFIA estimates based on vehicle registration certificates issued by the Italian Ministry of Transport

³ Heavy Commercial Vehicles of 18t and over

New heavy commercial vehicle registrations in the EU - 12 month trend



PROVISIONAL EU+EFTA¹ COUNTRIES NEW REGISTRATION FIGURES BY MARKET NEW MEDIUM & HEAVY COMMERCIAL VEHICLES over 3.5t²

21/10/16

	September '16	September '15	% Change	Jan-Sep '16	Jan-Sep '15	% Change
AUSTRIA	680	641	6,1%	6.278	5.699	10,2%
BELGIUM	1.003	825	21,6%	7.607	6.545	16,2%
BULGARIA	N/A	N/A	N/A	N/A	N/A	N/A
CROATIA	72	73	-1,4%	1.065	809	31,6%
CYPRUS	8	2	300,0%	42	36	16,7%
CZECH REPUBLIC	1.048	1.032	1,6%	8.346	7.518	11,0%
DENMARK	496	443	12,0%	3.780	3.514	7,6%
ESTONIA	97	85	14,1%	711	592	20,1%
FINLAND	276	227	21,6%	2.490	2.026	22,9%
FRANCE	4.238	3.834	10,5%	35.609	30.842	15,5%
GERMANY	7.997	7.735	3,4%	70.486	65.932	6,9%
GREECE	17	59	-71,2%	262	275	-4,7%
HUNGARY	349	454	-23,1%	3.658	3.838	-4,7%
IRELAND	189	162	16,7%	2.306	1.644	40,3%
ITALY ³	1.738	1.152	50,9%	15.646	11.402	37,2%
LATVIA	123	93	32,3%	1.151	1.001	15,0%
LITHUANIA ⁴	573	597	-4,0%	4.884	2.798	74,6%
LUXEMBOURG	125	108	15,7%	964	820	17,6%
NETHERLANDS	1.339	1.228	9,0%	12.291	10.748	14,4%
POLAND	2.506	2.266	10,6%	19.385	15.664	23,8%
PORTUGAL	480	392	22,4%	3.272	2.709	20,8%
ROMANIA	577	489	18,0%	5.781	4.101	41,0%
SLOVAKIA	390	467	-16,5%	3.490	3.335	4,6%
SLOVENIA ⁴	209	154	35,7%	1.745	1.348	29,5%
SPAIN	2.119	1.745	21,4%	16.788	14.799	13,4%
SWEDEN	631	493	28,0%	4.577	3.806	20,3%
UNITED KINGDOM ⁴	4.152	6.009	-30,9%	32.919	33.689	-2,3%
EUROPEAN UNION	31.432	30.765	2,2%	265.533	235.490	12,8%
EU15	25.480	25.053	1,7%	215.275	194.450	10,7%
EU12	5.952	5.712	4,2%	50.258	41.040	22,5%
ICELAND	13	21	-38,1%	219	162	35,2%
NORWAY	594	467	27,2%	4.537	4.049	12,1%
SWITZERLAND	317	319	-0,6%	3.204	3.040	5,4%
EFTA	924	807	14,5%	7.960	7.251	9,8%
EU+EFTA	32.356	31.572	2,5%	273.493	242.741	12,7%
WESTERN EUROPE (EU15+EFTA)	26.404	25.860	2,1%	223.235	201.701	10,7%

SOURCE: NATIONAL AUTOMOBILE MANUFACTURERS' ASSOCIATIONS

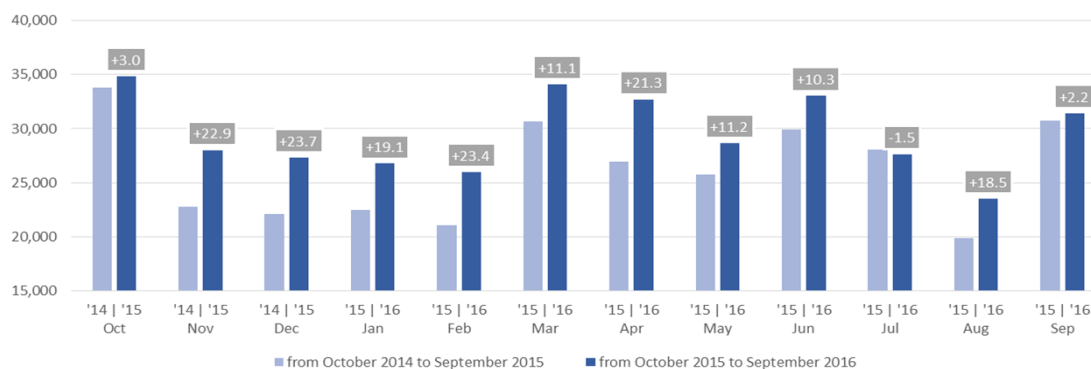
¹ Data for Malta unavailable

³ ANFIA estimates based on vehicle registration certificates issued by the Italian Ministry of Transport

² Excluding total Buses & Coaches over 3.5t

⁴ Estimates

New medium and heavy commercial vehicle registrations in the EU - 12 month trend





PROVISIONAL EU+EFTA¹ COUNTRIES NEW REGISTRATION FIGURES BY MARKET NEW MEDIUM & HEAVY BUSES & COACHES over 3.5t

21/10/16

	September '16	September '15	% Change	Jan-Sep '16	Jan-Sep '15	% Change
AUSTRIA	58	78	-25,6%	802	664	20,8%
BELGIUM	31	36	-13,9%	573	765	-25,1%
BULGARIA	N/A	N/A	N/A	N/A	N/A	N/A
CROATIA	21	9	133,3%	158	98	61,2%
CYPRUS	N/A	N/A	N/A	N/A	N/A	N/A
CZECH REPUBLIC	96	106	-9,4%	716	777	-7,9%
DENMARK	92	71	29,6%	498	316	57,6%
ESTONIA	8	23	-65,2%	157	179	-12,3%
FINLAND	27	46	-41,3%	455	431	5,6%
FRANCE	526	641	-17,9%	5.118	5.345	-4,2%
GERMANY	420	369	13,8%	4.509	3.940	14,4%
GREECE	10	7	42,9%	164	103	59,2%
HUNGARY	51	21	142,9%	314	274	14,6%
IRELAND	25	22	13,6%	342	266	28,6%
ITALY ²	250	206	21,4%	1.848	1.909	-3,2%
LATVIA	36	8	350,0%	102	188	-45,7%
LITHUANIA ³	12	22	-45,5%	221	168	31,5%
LUXEMBOURG	26	44	-40,9%	175	234	-25,2%
NETHERLANDS	31	13	138,5%	310	305	1,6%
POLAND	103	97	6,2%	1.434	1.212	18,3%
PORTUGAL	19	18	5,6%	285	219	30,1%
ROMANIA	107	545	-80,4%	864	1.823	-52,6%
SLOVAKIA	17	12	41,7%	264	206	28,2%
SLOVENIA ³	9	19	-52,6%	156	123	26,8%
SPAIN	644	466	38,2%	2.358	2.020	16,7%
SWEDEN	141	71	98,6%	986	874	12,8%
UNITED KINGDOM ³	1.174	1.055	11,3%	6.238	6.465	-3,5%
EUROPEAN UNION	3.934	4.005	-1,8%	29.047	28.904	0,5%
EU15	3.474	3.143	10,5%	24.661	23.856	3,4%
EU12	460	862	-46,6%	4.386	5.048	-13,1%
ICELAND	4	10	-60,0%	201	99	103,0%
NORWAY	45	36	25,0%	1.193	693	72,2%
SWITZERLAND	47	57	-17,5%	458	479	-4,4%
EFTA	96	103	-6,8%	1.852	1.271	45,7%
EU+EFTA	4.030	4.108	-1,9%	30.899	30.175	2,4%
WESTERN EUROPE (EU15+EFTA)	3.570	3.246	10,0%	26.513	25.127	5,5%

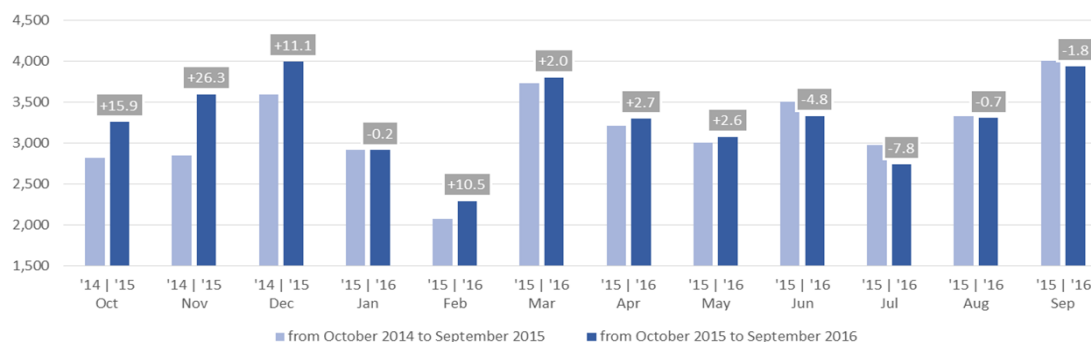
SOURCE: NATIONAL AUTOMOBILE MANUFACTURERS' ASSOCIATIONS

¹ Data for Malta unavailable

² ANFIA estimates based on vehicle registration certificates issued by the Italian Ministry of Transport

³ Estimates

New medium and heavy buses & coaches registrations in the EU - 12 month trend





PROVISIONAL EU+EFTA¹ COUNTRIES NEW REGISTRATION FIGURES BY MARKET TOTAL NEW COMMERCIAL VEHICLES²

21/10/16

	September '16	September '15	% Change	Jan-Sep '16	Jan-Sep '15	% Change
AUSTRIA	3.608	3.708	-2,7%	34.751	30.908	12,4%
BELGIUM	6.406	5.370	19,3%	60.976	54.540	11,8%
BULGARIA ³	366	411	-10,9%	3.386	3.321	2,0%
CROATIA	705	617	14,3%	7.474	5.839	28,0%
CYPRUS ⁴	188	211	-10,9%	1.434	1.082	32,5%
CZECH REPUBLIC	2.778	2.394	16,0%	23.247	20.057	15,9%
DENMARK	3.291	3.234	1,8%	32.144	27.265	17,9%
ESTONIA	424	472	-10,2%	3.903	3.531	10,5%
FINLAND	1.472	1.230	19,7%	12.891	10.943	17,8%
FRANCE	40.090	40.552	-1,1%	339.471	308.335	10,1%
GERMANY	28.693	27.300	5,1%	264.790	237.972	11,3%
GREECE	421	430	-2,1%	4.634	4.571	1,4%
HUNGARY	2.061	1.788	15,3%	19.440	15.881	22,4%
IRELAND	1.842	1.766	4,3%	28.813	23.680	21,7%
ITALY ⁵	18.448	12.607	46,3%	148.086	105.617	40,2%
LATVIA	345	272	26,8%	2.857	2.898	-1,4%
LITHUANIA	825	811	1,7%	7.301	4.661	56,6%
LUXEMBOURG	427	433	-1,4%	4.408	3.823	15,3%
NETHERLANDS	6.666	6.045	10,3%	68.051	56.067	21,4%
POLAND	7.341	7.125	3,0%	65.194	53.845	21,1%
PORTUGAL	3.483	2.967	17,4%	28.156	24.255	16,1%
ROMANIA	2.172	2.006	8,3%	17.025	13.605	25,1%
SLOVAKIA	832	1.118	-25,6%	9.400	8.455	11,2%
SLOVENIA	996	790	26,1%	9.001	6.752	33,3%
SPAIN	16.292	14.274	14,1%	145.838	128.981	13,1%
SWEDEN	5.426	4.618	17,5%	43.695	36.914	18,4%
UNITED KINGDOM	65.183	65.808	-0,9%	330.871	324.315	2,0%
EUROPEAN UNION	220.781	208.357	6,0%	1.717.237	1.518.113	13,1%
EU15	201.748	190.342	6,0%	1.547.575	1.378.186	12,3%
EU12	19.033	18.015	5,7%	169.662	139.927	21,3%
ICELAND	135	136	-0,7%	1.791	1.338	33,9%
NORWAY	3.482	2.953	17,9%	30.110	27.607	9,1%
SWITZERLAND	2.892	2.919	-0,9%	26.583	26.818	-0,9%
EFTA	6.509	6.008	8,3%	58.484	55.763	4,9%
EU+EFTA	227.290	214.365	6,0%	1.775.721	1.573.876	12,8%
WESTERN EUROPE (EU15+EFTA)	208.257	196.350	6,1%	1.606.059	1.433.949	12,0%

SOURCE: NATIONAL AUTOMOBILE MANUFACTURERS' ASSOCIATIONS

¹ Data for Malta unavailable

⁴ Data for Buses & Coaches unavailable

² Total Light, Medium & Heavy Commercial Vehicles and Buses & Coaches

⁵ ANFIA estimates based on vehicle registration certificates issued by the Italian Ministry of Transp.

³ Data for Medium & Heavy Commercial Vehicles and Buses & Coaches unavailable

Total new commercial vehicle registrations in the EU - 12 month trend

