

## PROVISIONAL EU+EFTA<sup>1</sup> COUNTRIES NEW REGISTRATION FIGURES BY MARKET NEW LIGHT COMMERCIAL VEHICLES up to 3.5t<sup>2</sup>

25/05/16

	April '16	April '15	% Change	Jan-Apr '16	Jan-Apr '15	% Change
AUSTRIA	3.340	3.142	6,3%	12.028	10.460	15,0%
BELGIUM	6.075	6.257	-2,9%	24.623	23.167	6,3%
BULGARIA	369	320	15,3%	1.526	1.436	6,3%
CROATIA	679	638	6,4%	2.415	2.083	15,9%
CYPRUS	109	96	13,5%	501	338	48,2%
CZECH REPUBLIC	1.550	1.417	9,4%	5.718	5.478	4,4%
DENMARK	3.193	2.668	19,7%	12.073	10.269	17,6%
ESTONIA	350	322	8,7%	1.308	1.286	1,7%
FINLAND	1.188	961	23,6%	4.418	3.906	13,1%
FRANCE	36.037	33.086	8,9%	135.676	124.037	9,4%
GERMANY	22.031	20.202	9,1%	80.065	73.278	9,3%
GREECE	535	568	-5,8%	1.650	2.480	-33,5%
HUNGARY	1.802	1.336	34,9%	6.541	5.503	18,9%
IRELAND	2.305	2.078	10,9%	15.722	12.153	29,4%
ITALY	14.250	10.891	30,8%	53.746	41.210	30,4%
LATVIA	184	214	-14,0%	694	750	-7,5%
LITHUANIA	286	155	84,5%	964	733	31,5%
LUXEMBOURG	368	311	18,3%	1.488	1.220	22,0%
NETHERLANDS	5.971	4.618	29,3%	27.312	21.493	27,1%
POLAND	5.310	4.028	31,8%	19.259	15.914	21,0%
PORTUGAL	2.594	2.394	8,4%	10.661	9.082	17,4%
ROMANIA	1.158	806	43,7%	4.420	3.121	41,6%
SLOVAKIA	614	648	-5,2%	2.395	2.098	14,2%
SLOVENIA	854	628	36,0%	3.354	2.329	44,0%
SPAIN	15.256	12.933	18,0%	54.126	48.639	11,3%
SWEDEN	4.724	4.375	8,0%	16.429	14.456	13,6%
UNITED KINGDOM	27.880	24.927	11,8%	126.786	122.702	3,3%
<b>EUROPEAN UNION</b>	<b>159.012</b>	<b>140.019</b>	<b>13,6%</b>	<b>625.898</b>	<b>559.621</b>	<b>11,8%</b>
EU15 <sup>3</sup>	145.747	129.411	12,6%	576.803	518.552	11,2%
EU12 <sup>4</sup>	13.265	10.608	25,0%	49.095	41.069	19,5%
ICELAND	210	139	51,1%	642	417	54,0%
NORWAY	3.121	2.887	8,1%	10.274	10.493	-2,1%
SWITZERLAND	2.884	2.584	11,6%	10.393	10.281	1,1%
EFTA	6.215	5.610	10,8%	21.309	21.191	0,6%
<b>EU+EFTA</b>	<b>165.227</b>	<b>145.629</b>	<b>13,5%</b>	<b>647.207</b>	<b>580.812</b>	<b>11,4%</b>
<b>WESTERN EUROPE (EU15+EFTA)</b>	<b>151.962</b>	<b>135.021</b>	<b>12,5%</b>	<b>598.112</b>	<b>539.743</b>	<b>10,8%</b>

SOURCE: NATIONAL AUTOMOBILE MANUFACTURERS' ASSOCIATIONS

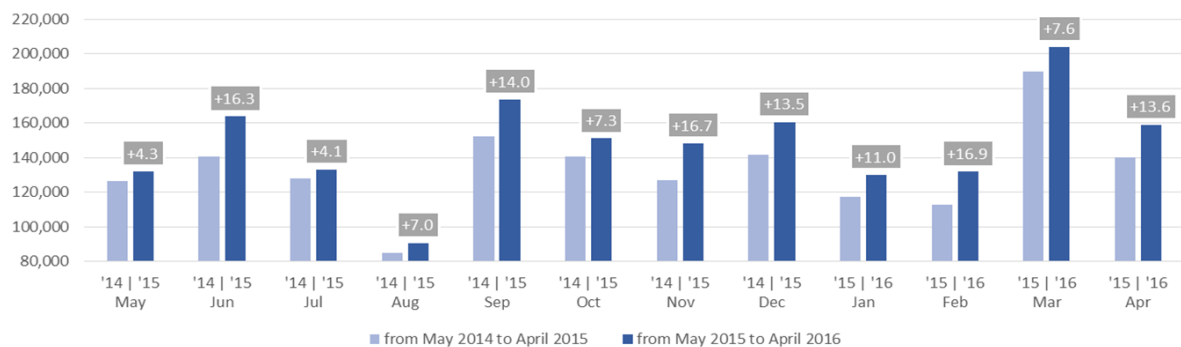
<sup>1</sup> Data for Malta unavailable

<sup>3</sup> Member States before the 2004 enlargement

<sup>2</sup> Including Light Buses & Coaches

<sup>4</sup> Member States having joined the EU since 2004 (data for Malta unavailable)

### New light commercial vehicle registrations in the EU - 12 month trend



## PROVISIONAL

### EU+EFTA<sup>1</sup> COUNTRIES NEW REGISTRATION FIGURES BY MARKET NEW HEAVY COMMERCIAL VEHICLES of 16t and over<sup>2</sup>

25/05/16

	April '16	April '15	% Change	Jan-Apr '16	Jan-Apr '15	% Change
AUSTRIA	771	700	10,1%	2.688	2.511	7,0%
BELGIUM	779	537	45,1%	3.081	2.385	29,2%
BULGARIA	n.a	n.a	n.a	n.a	n.a	n.a
CROATIA	95	55	72,7%	399	243	64,2%
CYPRUS	2	0		11	9	22,2%
CZECH REPUBLIC <sup>3</sup>	891	769	15,9%	3.198	2.752	16,2%
DENMARK	397	397	0,0%	1.507	1.435	5,0%
ESTONIA	74	54	37,0%	337	272	23,9%
FINLAND	223	192	16,1%	851	647	31,5%
FRANCE	3.909	3.301	18,4%	14.006	11.942	17,3%
GERMANY	6.738	5.463	23,3%	22.771	20.305	12,1%
GREECE	23	18	27,8%	94	72	30,6%
HUNGARY	421	318	32,4%	1.563	1.727	-9,5%
IRELAND <sup>4</sup>	183	180	1,7%	991	657	50,8%
ITALY <sup>5</sup>	1.351	793	70,4%	4.997	3.885	28,6%
LATVIA	104	149	-30,2%	442	428	3,3%
LITHUANIA <sup>4</sup>	277	267	3,7%	1.782	995	79,1%
LUXEMBOURG <sup>4</sup>	98	105	-6,7%	477	349	36,7%
NETHERLANDS	1.380	1.150	20,0%	5.952	4.797	24,1%
POLAND	2.135	1.615	32,2%	8.009	5.713	40,2%
PORTUGAL	243	196	24,0%	1.200	899	33,5%
ROMANIA	656	428	53,3%	2.468	1.558	58,4%
SLOVAKIA	428	348	23,0%	1.438	1.425	0,9%
SLOVENIA <sup>4</sup>	165	151	9,3%	763	571	33,6%
SPAIN	1.602	1.210	32,4%	6.351	5.098	24,6%
SWEDEN	638	493	29,4%	1.866	1.523	22,5%
UNITED KINGDOM <sup>4</sup>	2.874	2.764	4,0%	11.155	10.059	10,9%
<b>EUROPEAN UNION</b>	<b>26.457</b>	<b>21.653</b>	<b>22,2%</b>	<b>98.397</b>	<b>82.257</b>	<b>19,6%</b>
<b>EU15</b>	<b>21.209</b>	<b>17.499</b>	<b>21,2%</b>	<b>77.987</b>	<b>66.564</b>	<b>17,2%</b>
<b>EU12</b>	<b>5.248</b>	<b>4.154</b>	<b>26,3%</b>	<b>20.410</b>	<b>15.693</b>	<b>30,1%</b>
ICELAND	27	8	237,5%	57	32	78,1%
NORWAY <sup>4</sup>	328	336	-2,4%	1.321	1.299	1,7%
SWITZERLAND <sup>3</sup>	271	299	-9,4%	1.105	1.050	5,2%
EFTA	626	643	-2,6%	2.483	2.381	4,3%
<b>EU+EFTA</b>	<b>27.083</b>	<b>22.296</b>	<b>21,5%</b>	<b>100.880</b>	<b>84.638</b>	<b>19,2%</b>
<b>WESTERN EUROPE (EU15+EFTA)</b>	<b>21.835</b>	<b>18.142</b>	<b>20,4%</b>	<b>80.470</b>	<b>68.945</b>	<b>16,7%</b>

SOURCE: NATIONAL AUTOMOBILE MANUFACTURERS' ASSOCIATIONS

<sup>1</sup> Data for Malta unavailable

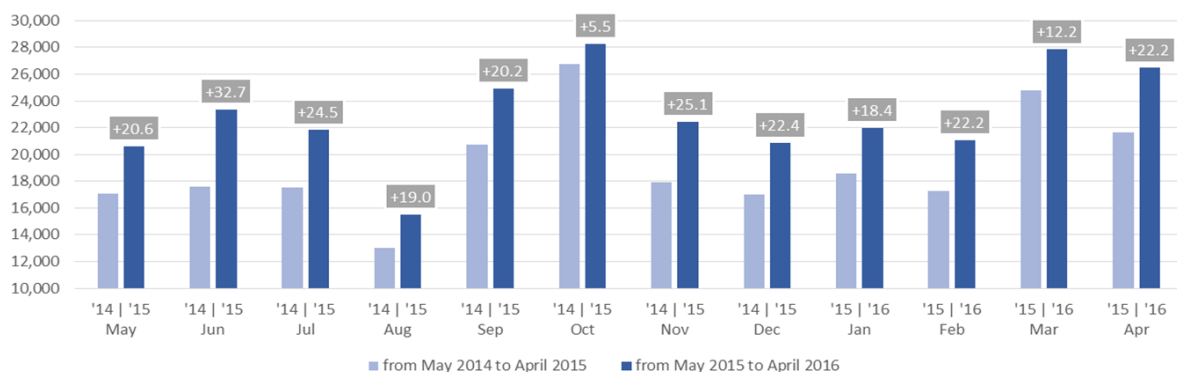
<sup>4</sup> AAA estimates

<sup>2</sup> Excluding Heavy Buses & Coaches

<sup>5</sup> ANFIA estimates based on vehicle registration certificates issued by the Italian Ministry of Transport

<sup>3</sup> Heavy Commercial Vehicles of 18t and over

### New heavy commercial vehicle registrations in the EU - 12 month trend



# P R E S S   R E L E A S E

## PROVISIONAL

### EU+EFTA<sup>1</sup> COUNTRIES NEW REGISTRATION FIGURES BY MARKET NEW MEDIUM & HEAVY COMMERCIAL VEHICLES over 3.5t<sup>2</sup>

25/05/16

	April '16	April '15	% Change	Jan-Apr '16	Jan-Apr '15	% Change
AUSTRIA	812	748	8,6%	2.862	2.687	6,5%
BELGIUM	929	698	33,1%	3.655	2.937	24,4%
BULGARIA	n.a.	n.a.	n.a.	n.a.	n.a.	n.a.
CROATIA	125	76	64,5%	467	319	46,4%
CYPRUS	3	4	-25,0%	14	18	-22,2%
CZECH REPUBLIC	1.101	926	18,9%	3.851	3.312	16,3%
DENMARK	444	448	-0,9%	1.695	1.594	6,3%
ESTONIA	78	62	25,8%	354	292	21,2%
FINLAND	278	249	11,6%	1.066	839	27,1%
FRANCE	4.600	3.909	17,7%	16.313	13.992	16,6%
GERMANY	9.267	7.676	20,7%	31.497	28.151	11,9%
GREECE	41	26	57,7%	139	123	13,0%
HUNGARY	469	362	29,6%	1.700	1.846	-7,9%
IRELAND	251	199	26,1%	1.193	745	60,1%
ITALY <sup>3</sup>	1.724	1.071	61,0%	6.292	4.938	27,4%
LATVIA	107	161	-33,5%	456	454	0,4%
LITHUANIA <sup>4</sup>	278	271	2,6%	1.803	1.012	78,2%
LUXEMBOURG	98	105	-6,7%	477	364	31,0%
NETHERLANDS	1.536	1.262	21,7%	6.512	5.290	23,1%
POLAND	2.339	1.803	29,7%	8.636	6.334	36,3%
PORTUGAL	298	257	16,0%	1.427	1.090	30,9%
ROMANIA	683	451	51,4%	2.593	1.632	58,9%
SLOVAKIA	484	378	28,0%	1.624	1.522	6,7%
SLOVENIA <sup>4</sup>	176	164	7,3%	816	629	29,7%
SPAIN	1.994	1.459	36,7%	7.715	6.036	27,8%
SWEDEN	690	556	24,1%	2.056	1.713	20,0%
UNITED KINGDOM <sup>4</sup>	3.901	3.632	7,4%	15.117	13.291	13,7%
<b>EUROPEAN UNION</b>	<b>32.706</b>	<b>26.953</b>	<b>21,3%</b>	<b>120.330</b>	<b>101.160</b>	<b>19,0%</b>
<b>EU15</b>	<b>26.863</b>	<b>22.295</b>	<b>20,5%</b>	<b>98.016</b>	<b>83.790</b>	<b>17,0%</b>
<b>EU12</b>	<b>5.843</b>	<b>4.658</b>	<b>25,4%</b>	<b>22.314</b>	<b>17.370</b>	<b>28,5%</b>
ICELAND	38	17	123,5%	102	59	72,9%
NORWAY	595	483	23,2%	1.842	1.683	9,4%
SWITZERLAND	355	368	-3,5%	1.379	1.312	5,1%
<b>EFTA</b>	<b>988</b>	<b>868</b>	<b>13,8%</b>	<b>3.323</b>	<b>3.054</b>	<b>8,8%</b>
<b>EU+EFTA</b>	<b>33.694</b>	<b>27.821</b>	<b>21,1%</b>	<b>123.653</b>	<b>104.214</b>	<b>18,7%</b>
<b>WESTERN EUROPE (EU15+EFTA)</b>	<b>27.851</b>	<b>23.163</b>	<b>20,2%</b>	<b>101.339</b>	<b>86.844</b>	<b>16,7%</b>

SOURCE: NATIONAL AUTOMOBILE MANUFACTURERS' ASSOCIATIONS

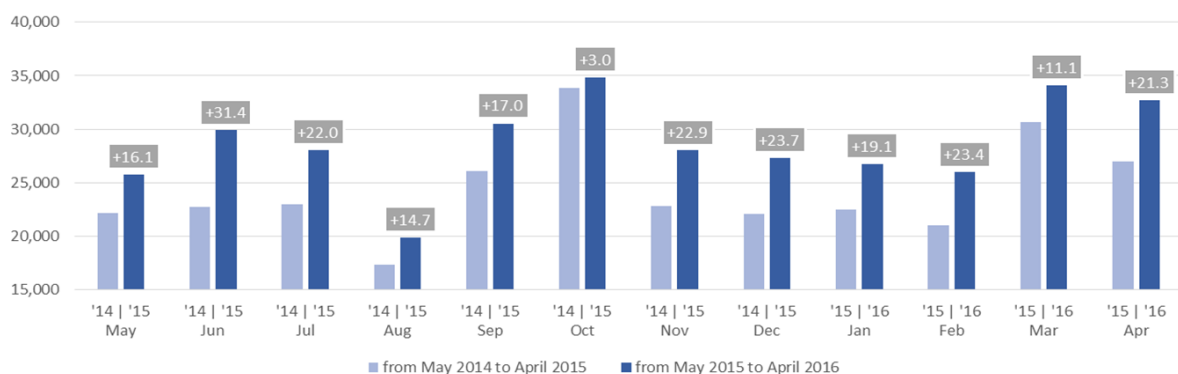
<sup>1</sup> Data for Malta unavailable

<sup>3</sup> ANFIA estimates based on vehicle registration certificates issued by the Italian Ministry of Transport

<sup>2</sup> Excluding total Buses & Coaches over 3,5t

<sup>4</sup> AAA estimates

### New medium and heavy commercial vehicle registrations in the EU - 12 month trend



**PROVISIONAL**  
**EU+EFTA<sup>1</sup> COUNTRIES NEW REGISTRATION FIGURES BY MARKET**  
**NEW MEDIUM & HEAVY BUSES & COACHES over 3.5t**

25/05/16

	April '16	April '15	% Change	Jan-Apr '16	Jan-Apr '15	% Change
AUSTRIA	91	98	-7,1%	454	341	33,1%
BELGIUM	85	148	-42,6%	300	410	-26,8%
BULGARIA	n.a.	n.a.	n.a.	n.a.	n.a.	n.a.
CROATIA	20	29	-31,0%	77	60	28,3%
CYPRUS	n.a.	n.a.	n.a.	n.a.	n.a.	n.a.
CZECH REPUBLIC	114	131	-13,0%	313	366	-14,5%
DENMARK	27	14	92,9%	131	89	47,2%
ESTONIA	37	22	68,2%	111	86	29,1%
FINLAND	37	27	37,0%	119	127	-6,3%
FRANCE	457	491	-6,9%	2.072	1.938	6,9%
GERMANY	621	544	14,2%	2.070	1.830	13,1%
GREECE	21	15	40,0%	53	38	39,5%
HUNGARY	27	45	-40,0%	168	118	42,4%
IRELAND	63	29	117,2%	186	136	36,8%
ITALY <sup>2</sup>	238	270	-11,9%	881	1.009	-12,7%
LATVIA	14	41	-65,9%	37	105	-64,8%
LITHUANIA <sup>3</sup>	13	6	116,7%	56	58	-3,4%
LUXEMBOURG	30	23	30,4%	86	119	-27,7%
NETHERLANDS	87	58	50,0%	219	162	35,2%
POLAND	152	169	-10,1%	664	547	21,4%
PORTUGAL	41	17	141,2%	224	133	68,4%
ROMANIA	94	89	5,6%	341	277	23,1%
SLOVAKIA	54	23	134,8%	112	102	9,8%
SLOVENIA <sup>3</sup>	24	25	-4,0%	76	57	33,3%
SPAIN	207	213	-2,8%	974	939	3,7%
SWEDEN	78	65	20,0%	220	262	-16,0%
UNITED KINGDOM <sup>3</sup>	663	615	7,8%	2.394	2.610	-8,3%
<b>EUROPEAN UNION</b>	<b>3.295</b>	<b>3.207</b>	<b>2,7%</b>	<b>12.338</b>	<b>11.919</b>	<b>3,5%</b>
<b>EU15</b>	<b>2.746</b>	<b>2.627</b>	<b>4,5%</b>	<b>10.383</b>	<b>10.143</b>	<b>2,4%</b>
<b>EU12</b>	<b>549</b>	<b>580</b>	<b>-5,3%</b>	<b>1.955</b>	<b>1.776</b>	<b>10,1%</b>
<b>ICELAND</b>	<b>12</b>	<b>9</b>	<b>33,3%</b>	<b>49</b>	<b>30</b>	<b>63,3%</b>
<b>NORWAY</b>	<b>59</b>	<b>32</b>	<b>84,4%</b>	<b>215</b>	<b>196</b>	<b>9,7%</b>
<b>SWITZERLAND</b>	<b>53</b>	<b>60</b>	<b>-11,7%</b>	<b>141</b>	<b>183</b>	<b>-23,0%</b>
<b>EFTA</b>	<b>124</b>	<b>101</b>	<b>22,8%</b>	<b>405</b>	<b>409</b>	<b>-1,0%</b>
<b>EU+EFTA</b>	<b>3.419</b>	<b>3.308</b>	<b>3,4%</b>	<b>12.743</b>	<b>12.328</b>	<b>3,4%</b>
<b>WESTERN EUROPE (EU15+EFTA)</b>	<b>2.870</b>	<b>2.728</b>	<b>5,2%</b>	<b>10.788</b>	<b>10.552</b>	<b>2,2%</b>

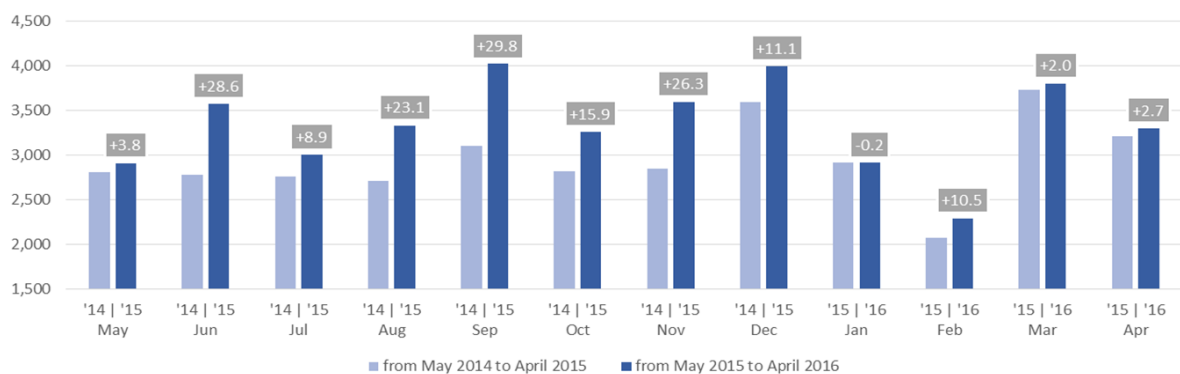
SOURCE: NATIONAL AUTOMOBILE MANUFACTURERS' ASSOCIATIONS

<sup>1</sup> Data for Malta unavailable

<sup>2</sup> ANFIA estimates based on vehicle registration certificates issued by the Italian Ministry of Transport

<sup>3</sup> AAA estimates

New medium and heavy buses & coaches registrations in the EU - 12 month trend



## PROVISIONAL EU+EFTA<sup>1</sup> COUNTRIES NEW REGISTRATION FIGURES BY MARKET TOTAL NEW COMMERCIAL VEHICLES<sup>2</sup>

25/05/16

	April '16	April '15	% Change	Jan-Apr '16	Jan-Apr '15	% Change
AUSTRIA	4.243	3.988	6,4%	15.344	13.488	13,8%
BELGIUM	7.089	7.103	-0,2%	28.578	26.514	7,8%
BULGARIA <sup>3</sup>	369	320	15,3%	1.526	1.436	6,3%
CROATIA	824	743	10,9%	2.959	2.462	20,2%
CYPRUS <sup>4</sup>	112	100	12,0%	515	356	44,7%
CZECH REPUBLIC	2.765	2.474	11,8%	9.882	9.156	7,9%
DENMARK	3.664	3.130	17,1%	13.899	11.952	16,3%
ESTONIA	465	406	14,5%	1.773	1.664	6,6%
FINLAND	1.503	1.237	21,5%	5.603	4.872	15,0%
FRANCE	41.094	37.486	9,6%	154.061	139.967	10,1%
GERMANY	31.919	28.422	12,3%	113.632	103.259	10,0%
GREECE	597	609	-2,0%	1.842	2.641	-30,3%
HUNGARY	2.298	1.743	31,8%	8.409	7.467	12,6%
IRELAND	2.619	2.306	13,6%	17.101	13.034	31,2%
ITALY <sup>5</sup>	16.212	12.232	32,5%	60.919	47.157	29,2%
LATVIA	305	416	-26,7%	1.187	1.309	-9,3%
LITHUANIA	577	432	33,6%	2.823	1.803	56,6%
LUXEMBOURG	496	439	13,0%	2.051	1.703	20,4%
NETHERLANDS	7.594	5.938	27,9%	34.043	26.945	26,3%
POLAND	7.801	6.000	30,0%	28.559	22.795	25,3%
PORTUGAL	2.933	2.668	9,9%	12.312	10.305	19,5%
ROMANIA	1.935	1.346	43,8%	7.354	5.030	46,2%
SLOVAKIA	1.152	1.049	9,8%	4.131	3.722	11,0%
SLOVENIA	1.054	817	29,0%	4.246	3.015	40,8%
SPAIN	17.457	14.605	19,5%	62.815	55.614	12,9%
SWEDEN	5.492	4.996	9,9%	18.705	16.431	13,8%
UNITED KINGDOM	32.444	29.174	11,2%	144.297	138.603	4,1%
<b>EUROPEAN UNION</b>	<b>195.013</b>	<b>170.179</b>	<b>14,6%</b>	<b>758.566</b>	<b>672.700</b>	<b>12,8%</b>
<b>EU15</b>	<b>175.356</b>	<b>154.333</b>	<b>13,6%</b>	<b>685.202</b>	<b>612.485</b>	<b>11,9%</b>
<b>EU12</b>	<b>19.657</b>	<b>15.846</b>	<b>24,1%</b>	<b>73.364</b>	<b>60.215</b>	<b>21,8%</b>
ICELAND	260	165	57,6%	793	506	56,7%
NORWAY	3.775	3.402	11,0%	12.331	12.372	-0,3%
SWITZERLAND	3.292	3.012	9,3%	11.913	11.776	1,2%
<b>EFTA</b>	<b>7.327</b>	<b>6.579</b>	<b>11,4%</b>	<b>25.037</b>	<b>24.654</b>	<b>1,6%</b>
<b>EU+EFTA</b>	<b>202.340</b>	<b>176.758</b>	<b>14,5%</b>	<b>783.603</b>	<b>697.354</b>	<b>12,4%</b>
<b>WESTERN EUROPE (EU15+EFTA)</b>	<b>182.683</b>	<b>160.912</b>	<b>13,5%</b>	<b>710.239</b>	<b>637.139</b>	<b>11,5%</b>

SOURCE: NATIONAL AUTOMOBILE MANUFACTURERS' ASSOCIATIONS

<sup>1</sup> Data for Malta unavailable

<sup>4</sup> Data for Buses & Coaches unavailable

<sup>2</sup> Total Light, Medium & Heavy Commercial Vehicles and Buses & Coaches

<sup>5</sup> ANFIA estimates based on vehicle registration certificates issued by the Italian Ministry of Transp.

<sup>3</sup> Data for Medium & Heavy Commercial Vehicles and Buses & Coaches unavailable

Total new commercial vehicle registrations in the EU - 12 month trend

