

PROVISIONAL EU¹+EFTA COUNTRIES NEW REGISTRATION FIGURES BY MARKET NEW LIGHT COMMERCIAL VEHICLES up to 3.5t²

18/12/15

	November '15	November '14	% Change	Jan-Nov '15	Jan-Nov '14	% Change
AUSTRIA	2.795	2.363	18,3%	30.274	28.923	4,7%
BELGIUM	4.479	3.865	15,9%	56.823	49.512	14,8%
BULGARIA	476	344	38,4%	4.140	3.587	15,4%
CROATIA	623	368	69,3%	6.188	4.935	25,4%
CYPRUS	129	70	84,3%	1.319	1.060	24,4%
CZECH REPUBLIC	1.689	1.203	40,4%	15.209	11.637	30,7%
DENMARK	2.923	2.804	4,2%	29.162	25.464	14,5%
ESTONIA	288	274	5,1%	3.358	2.719	23,5%
FINLAND	963	818	17,7%	10.409	9.740	6,9%
FRANCE	30.736	29.427	4,4%	337.969	333.779	1,3%
GERMANY	24.234	20.637	17,4%	215.475	207.090	4,0%
GREECE	454	339	33,9%	5.079	4.213	20,6%
HUNGARY	1.867	1.614	15,7%	15.220	13.952	9,1%
IRELAND	626	612	2,3%	23.593	16.580	42,3%
ITALY ³	13.000	10.013	29,8%	117.734	106.152	10,9%
LATVIA	234	211	10,9%	2.154	2.238	-3,8%
LITHUANIA	221	156	41,7%	2.148	1.835	17,1%
LUXEMBOURG	386	279	38,4%	3.515	3.088	13,8%
NETHERLANDS	4.777	4.350	9,8%	54.307	49.048	10,7%
POLAND	5.015	3.922	27,9%	46.937	40.407	16,2%
PORTUGAL	3.026	2.536	19,3%	27.130	22.444	20,9%
ROMANIA	1.156	1.078	7,2%	9.779	8.988	8,8%
SLOVAKIA	892	488	82,8%	6.577	5.065	29,9%
SLOVENIA	722	548	31,8%	6.672	6.481	2,9%
SPAIN	13.796	8.693	58,7%	140.456	102.177	37,5%
SWEDEN	3.764	3.566	5,6%	40.297	37.602	7,2%
UNITED KINGDOM	29.051	26.516	9,6%	341.420	295.157	15,7%
EUROPEAN UNION¹	148.322	127.094	16,7%	1.553.344	1.393.873	11,4%
EU15⁴	135.010	116.818	15,6%	1.433.643	1.290.969	11,1%
EU12⁵	13.312	10.276	29,5%	119.701	102.904	16,3%
ICELAND⁶	73	61	19,7%	1.234	775	59,2%
NORWAY	3.032	2.553	18,8%	28.789	26.968	6,8%
SWITZERLAND	2.662	2.441	9,1%	28.410	26.487	7,3%
EFTA	5.767	5.055	14,1%	58.433	54.230	7,8%
EU+EFTA	154.089	132.149	16,6%	1.611.777	1.448.103	11,3%
WESTERN EUROPE (EU15+EFTA)	140.777	121.873	15,5%	1.492.076	1.345.199	10,9%

SOURCE: NATIONAL AUTOMOBILE MANUFACTURERS' ASSOCIATIONS

¹ Data for Malta unavailable

⁴ Member States before the 2004 enlargement

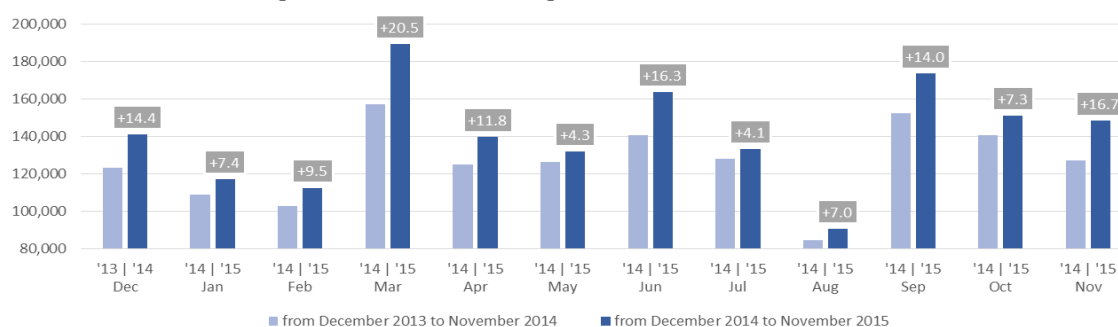
² Including Light Buses & Coaches

⁵ Member States having joined the EU since 2004 (data for Malta unavailable)

³ ANFIA estimates

⁶ AAA estimates

New light commercial vehicle registrations in the EU - 12 month trend



PROVISIONAL
EU¹+EFTA COUNTRIES NEW REGISTRATION FIGURES BY MARKET
NEW HEAVY COMMERCIAL VEHICLES of 16t and over²

18/12/15

	November '15	November '14	% Change	Jan-Nov '15	Jan-Nov '14	% Change
AUSTRIA	476	335	42,1%	6.405	6.054	5,8%
BELGIUM	489	453	7,9%	6.453	5.964	8,2%
BULGARIA	n.a	n.a	n.a	n.a	n.a	n.a
CROATIA	60	67	-10,4%	728	717	1,5%
CYPRUS	0	2	-100,0%	11	9	22,2%
CZECH REPUBLIC ³	854	696	22,7%	8.061	6.920	16,5%
DENMARK	364	240	51,7%	4.065	2.987	36,1%
ESTONIA	83	51	62,7%	687	668	2,8%
FINLAND	143	116	23,3%	1.956	1.788	9,4%
FRANCE	3.186	2.957	7,7%	33.491	29.831	12,3%
GERMANY	4.836	4.319	12,0%	56.868	54.096	5,1%
GREECE	27	7	285,7%	224	187	19,8%
HUNGARY	519	424	22,4%	4.586	3.892	17,8%
IRELAND ⁴	55	29	89,7%	1.483	1.435	3,3%
ITALY ⁵	1.039	793	31,0%	11.041	8.737	26,4%
LATVIA	134	51	162,7%	1.313	913	43,8%
LITHUANIA ⁴	236	125	88,8%	3.399	1.987	71,1%
LUXEMBOURG ⁴	75	45	66,7%	963	873	10,3%
NETHERLANDS	860	868	-0,9%	11.612	8.333	39,3%
POLAND	1.891	1.288	46,8%	18.250	13.801	32,2%
PORTUGAL	355	328	8,2%	2.823	2.088	35,2%
ROMANIA	705	339	108,0%	5.232	3.381	54,7%
SLOVAKIA	277	220	25,9%	3.770	2.963	27,2%
SLOVENIA ⁴	156	114	36,8%	1.595	1.230	29,7%
SPAIN	2.072	1.685	23,0%	17.567	12.362	42,1%
SWEDEN	443	378	17,2%	4.313	4.245	1,6%
UNITED KINGDOM	3.088	1.991	55,1%	32.221	25.288	27,4%
EUROPEAN UNION¹	22.423	17.921	25,1%	239.117	200.749	19,1%
EU15	17.508	14.544	20,4%	191.485	164.268	16,6%
EU12¹	4.915	3.377	45,5%	47.632	36.481	30,6%
ICELAND⁴	8	6	33,3%	106	69	53,6%
NORWAY⁴	314	320	-1,9%	3.649	3.790	-3,7%
SWITZERLAND³	241	200	20,5%	2.872	3.111	-7,7%
EFTA	563	526	7,0%	6.627	6.970	-4,9%
EU+EFTA	22.986	18.447	24,6%	245.744	207.719	18,3%
WESTERN EUROPE (EU15+EFTA)	18.071	15.070	19,9%	198.112	171.238	15,7%

SOURCE: NATIONAL AUTOMOBILE MANUFACTURERS' ASSOCIATIONS

¹ Data for Malta unavailable

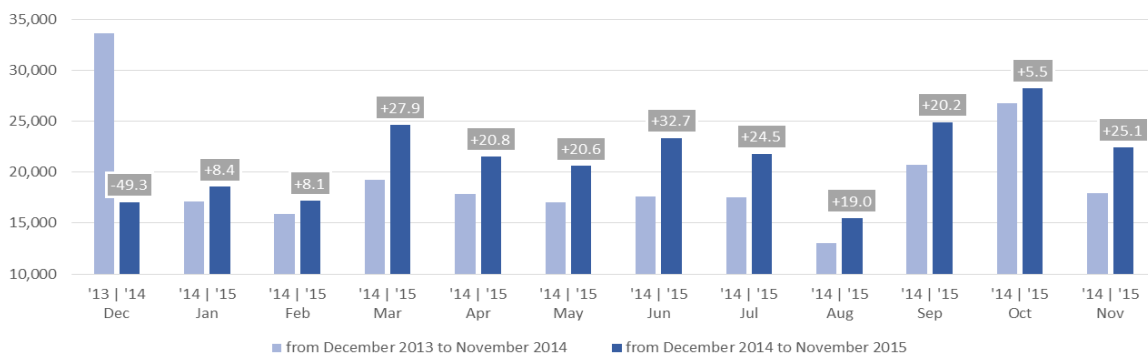
⁴ AAA estimates

² Excluding Heavy Buses & Coaches

⁵ ANFIA estimates based on vehicle registration certificates issued by the Italian Ministry of Transport

³ Heavy Commercial Vehicles of 18t and over

New heavy commercial vehicle registrations in the EU - 12 month trend



PROVISIONAL EU¹+EFTA COUNTRIES NEW REGISTRATION FIGURES BY MARKET NEW MEDIUM & HEAVY COMMERCIAL VEHICLES over 3.5t²

18/12/15

	November '15	November '14	% Change	Jan-Nov '15	Jan-Nov '14	% Change
AUSTRIA	519	391	32,7%	6.928	6.526	6,2%
BELGIUM	599	556	7,7%	7.870	7.369	6,8%
BULGARIA	n.a.	n.a.	n.a.	n.a.	n.a.	n.a.
CROATIA	67	70	-4,3%	949	905	4,9%
CYPRUS	0	3	-100,0%	40	23	73,9%
CZECH REPUBLIC	1.041	789	31,9%	9.682	8.313	16,5%
DENMARK	380	271	40,2%	4.425	3.305	33,9%
ESTONIA	86	56	53,6%	740	725	2,1%
FINLAND	187	157	19,1%	2.476	2.348	5,5%
FRANCE	3.651	3.411	7,0%	38.865	35.323	10,0%
GERMANY	7.446	6.959	7,0%	82.688	80.065	3,3%
GREECE	31	8	287,5%	400	318	25,8%
HUNGARY	562	451	24,6%	4.972	4.252	16,9%
IRELAND	76	31	145,2%	1.853	1.771	4,6%
ITALY ³	1.287	1.038	24,0%	14.113	11.635	21,3%
LATVIA	137	59	132,2%	1.387	992	39,8%
LITHUANIA ⁴	243	137	77,4%	3.497	2.113	65,5%
LUXEMBOURG	84	48	75,0%	1.025	963	6,4%
NETHERLANDS	996	966	3,1%	12.910	9.360	37,9%
POLAND	2.072	1.548	33,9%	20.202	15.942	26,7%
PORTUGAL	467	428	9,1%	3.619	2.719	33,1%
ROMANIA	728	354	105,6%	5.480	3.624	51,2%
SLOVAKIA	319	243	31,3%	3.860	3.051	26,5%
SLOVENIA ⁴	170	128	32,8%	1.741	1.360	28,0%
SPAIN	2.347	1.887	24,4%	20.496	14.591	40,5%
SWEDEN	528	435	21,4%	4.881	4.708	3,7%
UNITED KINGDOM	3.990	2.366	68,6%	43.014	35.634	20,7%
EUROPEAN UNION¹	28.013	22.790	22,9%	298.113	257.935	15,6%
EU15	22.588	18.952	19,2%	245.563	216.635	13,4%
EU12¹	5.425	3.838	41,3%	52.550	41.300	27,2%
ICELAND⁴	10	12	-16,7%	189	115	64,3%
NORWAY	406	378	7,4%	4.930	5.058	-2,5%
SWITZERLAND	319	261	22,2%	3.662	3.931	-6,8%
EFTA	735	651	12,9%	8.781	9.104	-3,5%
EU+EFTA	28.748	23.441	22,6%	306.894	267.039	14,9%
WESTERN EUROPE (EU15+EFTA)	23.323	19.603	19,0%	254.344	225.739	12,7%

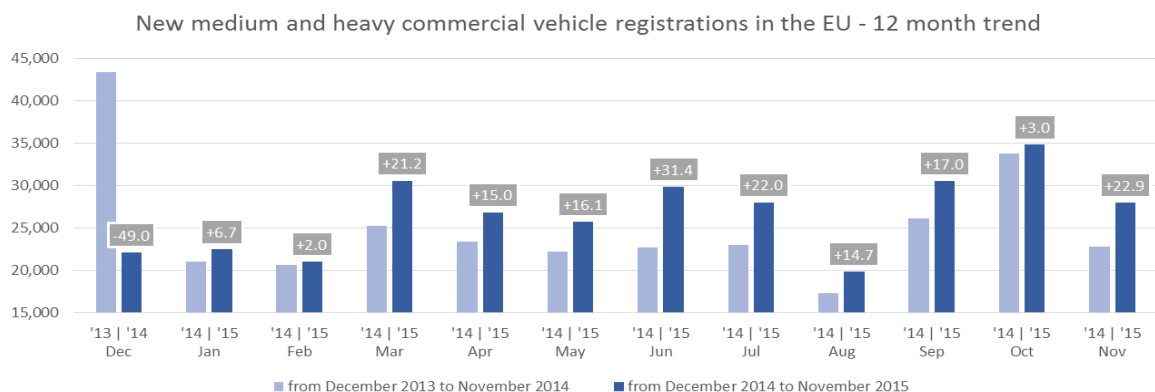
SOURCE: NATIONAL AUTOMOBILE MANUFACTURERS' ASSOCIATIONS

¹ Data for Malta unavailable

³ ANFIA estimates based on vehicle registration certificates issued by the Italian Ministry of Transport

² Excluding total Buses & Coaches over 3.5t

⁴ AAA estimates



PROVISIONAL
EU¹+EFTA COUNTRIES NEW REGISTRATION FIGURES BY MARKET
NEW MEDIUM & HEAVY BUSES & COACHES over 3.5t

18/12/15

	November '15	November '14	% Change	Jan-Nov '15	Jan-Nov '14	% Change
AUSTRIA	87	91	-4,4%	801	801	0,0%
BELGIUM	84	70	20,0%	892	1.041	-14,3%
BULGARIA	n.a.	n.a.	n.a.	n.a.	n.a.	n.a.
CROATIA	9	2	350,0%	116	93	24,7%
CYPRUS	n.a.	n.a.	n.a.	n.a.	n.a.	n.a.
CZECH REPUBLIC	226	132	71,2%	1.180	827	42,7%
DENMARK	108	76	42,1%	452	438	3,2%
ESTONIA	14	32	-56,3%	196	151	29,8%
FINLAND	27	33	-18,2%	489	661	-26,0%
FRANCE	682	362	88,4%	6.612	5.345	23,7%
GERMANY	749	626	19,6%	5.210	4.820	8,1%
GREECE	8	4	100,0%	121	169	-28,4%
HUNGARY	48	35	37,1%	452	344	31,4%
IRELAND	0	11	-100,0%	281	206	36,4%
ITALY ²	142	186	-23,7%	2.236	2.025	10,4%
LATVIA	2	22	-90,9%	202	182	11,0%
LITHUANIA ³	11	29	-62,1%	194	260	-25,4%
LUXEMBOURG	3	8	-62,5%	249	151	64,9%
NETHERLANDS	5	33	-84,8%	319	396	-19,4%
POLAND	209	103	102,9%	1.527	1.312	16,4%
PORTUGAL	11	15	-26,7%	243	218	11,5%
ROMANIA	126	101	24,8%	2.181	1.102	97,9%
SLOVAKIA	55	47	17,0%	282	352	-19,9%
SLOVENIA ³	17	11	54,5%	149	164	-9,1%
SPAIN	157	130	20,8%	2.382	1.671	42,5%
SWEDEN	178	93	91,4%	1.162	1.232	-5,7%
UNITED KINGDOM	637	595	7,1%	7.889	6.221	26,8%
EUROPEAN UNION¹	3.595	2.847	26,3%	35.817	30.182	18,7%
EU15	2.878	2.333	23,4%	29.338	25.395	15,5%
EU12¹	717	514	39,5%	6.479	4.787	35,3%
ICELAND³	1	0		94	63	49,2%
NORWAY	48	54	-11,1%	776	852	-8,9%
SWITZERLAND	97	70	38,6%	658	555	18,6%
EFTA	146	124	17,7%	1.528	1.470	3,9%
EU+EFTA	3.741	2.971	25,9%	37.345	31.652	18,0%
WESTERN EUROPE (EU15+EFTA)	3.024	2.457	23,1%	30.866	26.865	14,9%

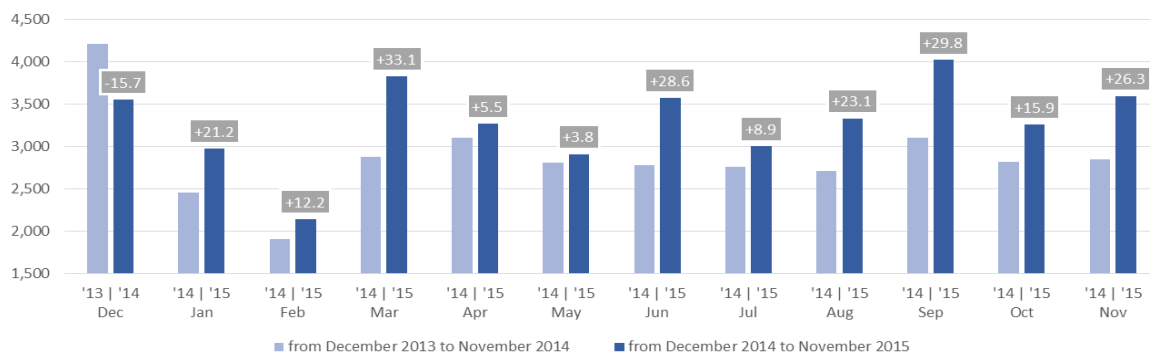
SOURCE: NATIONAL AUTOMOBILE MANUFACTURERS' ASSOCIATIONS

¹ Data for Malta unavailable

² ANFIA estimates based on vehicle registration certificates issued by the Italian Ministry of Transport

³ AAA estimates

New medium and heavy buses & coaches registrations in the EU - 12 month trend



PROVISIONAL EU¹+EFTA COUNTRIES NEW REGISTRATION FIGURES BY MARKET TOTAL NEW COMMERCIAL VEHICLES²

18/12/15

	November '15	November '14	% Change	Jan-Nov '15	Jan-Nov '14	% Change
AUSTRIA	3.401	2.845	19,5%	38.003	36.250	4,8%
BELGIUM	5.162	4.491	14,9%	65.585	57.922	13,2%
BULGARIA ³	476	344	38,4%	4.140	3.587	15,4%
CROATIA	699	440	58,9%	7.253	5.933	22,2%
CYPRUS ⁴	129	73	76,7%	1.359	1.083	25,5%
CZECH REPUBLIC	2.956	2.124	39,2%	26.071	20.777	25,5%
DENMARK	3.411	3.151	8,3%	34.039	29.207	16,5%
ESTONIA	388	362	7,2%	4.294	3.595	19,4%
FINLAND	1.177	1.008	16,8%	13.374	12.749	4,9%
FRANCE	35.069	33.200	5,6%	383.446	374.447	2,4%
GERMANY	32.429	28.222	14,9%	303.373	291.975	3,9%
GREECE	493	351	40,5%	5.600	4.700	19,1%
HUNGARY	2.477	2.100	18,0%	20.644	18.548	11,3%
IRELAND	702	654	7,3%	25.727	18.557	38,6%
ITALY ⁵	14.429	11.237	28,4%	134.083	119.812	11,9%
LATVIA	373	292	27,7%	3.743	3.412	9,7%
LITHUANIA	475	322	47,5%	5.839	4.208	38,8%
LUXEMBOURG	473	335	41,2%	4.789	4.202	14,0%
NETHERLANDS	5.778	5.349	8,0%	67.536	58.804	14,8%
POLAND	7.296	5.573	30,9%	68.666	57.661	19,1%
PORTUGAL	3.504	2.979	17,6%	30.992	25.381	22,1%
ROMANIA	2.010	1.533	31,1%	17.440	13.714	27,2%
SLOVAKIA	1.266	778	62,7%	10.719	8.468	26,6%
SLOVENIA	909	687	32,3%	8.562	8.005	7,0%
SPAIN	16.300	10.710	52,2%	163.334	118.439	37,9%
SWEDEN	4.470	4.094	9,2%	46.340	43.542	6,4%
UNITED KINGDOM	33.678	29.477	14,3%	392.323	337.012	16,4%
EUROPEAN UNION¹	179.930	152.731	17,8%	1.887.274	1.681.990	12,2%
EU15	160.476	138.103	16,2%	1.708.544	1.532.999	11,5%
EU12¹	19.454	14.628	33,0%	178.730	148.991	20,0%
ICELAND	84	73	15,1%	1.517	953	59,2%
NORWAY	3.486	2.985	16,8%	34.495	32.878	4,9%
SWITZERLAND	3.078	2.772	11,0%	32.730	30.973	5,7%
EFTA	6.648	5.830	14,0%	68.742	64.804	6,1%
EU+EFTA	186.578	158.561	17,7%	1.956.016	1.746.794	12,0%
WESTERN EUROPE (EU15+EFTA)	167.124	143.933	16,1%	1.777.286	1.597.803	11,2%

SOURCE: NATIONAL AUTOMOBILE MANUFACTURERS' ASSOCIATIONS

¹ Data for Malta unavailable

⁴ Data for Buses & Coaches unavailable

² Total Light, Medium & Heavy Commercial Vehicles and Buses & Coaches

⁵ ANFIA estimates based on vehicle registration certificates issued by the Italian Ministry of Transport

³ Data for Medium & Heavy Commercial Vehicles and Buses & Coaches unavailable

Total new commercial vehicle registrations in the EU - 12 month trend

