

PROVISIONAL

EU¹+EFTA COUNTRIES NEW REGISTRATION FIGURES BY MARKET NEW LIGHT COMMERCIAL VEHICLES up to 3.5t²

26/01/16

	December '15	December '14	% Change	Jan-Dec '15	Jan-Dec '14	% Change
AUSTRIA	2.588	2.245	15,3%	32.862	31.168	5,4%
BELGIUM	4.385	3.861	13,6%	61.208	53.373	14,7%
BULGARIA	581	385	50,9%	4.553	3.972	14,6%
CROATIA	501	271	84,9%	6.695	5.206	28,6%
CYPRUS	124	85	45,9%	1.443	1.145	26,0%
CZECH REPUBLIC	1.922	1.528	25,8%	17.131	13.165	30,1%
DENMARK	3.317	3.034	9,3%	32.479	28.498	14,0%
ESTONIA	222	199	11,6%	3.580	2.918	22,7%
FINLAND	1.022	885	15,5%	11.431	10.625	7,6%
FRANCE	39.769	36.583	8,7%	377.738	370.362	2,0%
GERMANY	22.427	21.233	5,6%	237.902	228.323	4,2%
GREECE	574	643	-10,7%	5.653	4.856	16,4%
HUNGARY	2.291	1.985	15,4%	17.515	15.937	9,9%
IRELAND	236	157	50,3%	23.722	16.732	41,8%
ITALY ³	14.200	11.465	23,9%	132.186	117.617	12,4%
LATVIA	193	301	-35,9%	2.347	2.539	-7,6%
LITHUANIA	219	162	35,2%	2.367	1.997	18,5%
LUXEMBOURG	292	269	8,6%	3.807	3.357	13,4%
NETHERLANDS	3.410	2.714	25,6%	57.717	51.761	11,5%
POLAND	6.347	5.170	22,8%	53.285	45.577	16,9%
PORTUGAL	3.728	3.722	0,2%	30.858	26.166	17,9%
ROMANIA	1.287	915	40,7%	11.066	9.903	11,7%
SLOVAKIA	720	565	27,4%	7.297	5.630	29,6%
SLOVENIA	780	497	56,9%	7.452	6.978	6,8%
SPAIN	14.472	11.686	23,8%	154.928	113.863	36,1%
SWEDEN	4.501	4.331	3,9%	44.798	41.933	6,8%
UNITED KINGDOM	30.410	26.529	14,6%	371.830	321.686	15,6%
EUROPEAN UNION¹	160.518	141.420	13,5%	1.713.850	1.535.287	11,6%
EU15⁴	145.331	129.357	12,3%	1.579.119	1.420.320	11,2%
EU12⁵	15.187	12.063	25,9%	134.731	114.967	17,2%
ICELAND⁶	104	83	25,3%	1.355	858	57,9%
NORWAY	4.465	2.643	68,9%	33.254	29.611	12,3%
SWITZERLAND	2.608	2.335	11,7%	31.018	28.822	7,6%
EFTA	7.177	5.061	41,8%	65.627	59.291	10,7%
EU+EFTA	167.695	146.481	14,5%	1.779.477	1.594.578	11,6%
WESTERN EUROPE (EU15+EFTA)	152.508	134.418	13,5%	1.644.746	1.479.611	11,2%

SOURCE: NATIONAL AUTOMOBILE MANUFACTURERS' ASSOCIATIONS

¹ Data for Malta unavailable

⁴ Member States before the 2004 enlargement

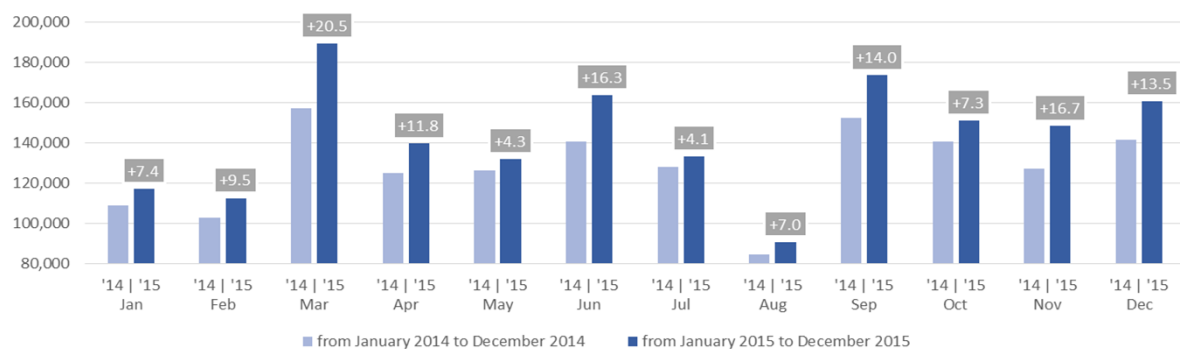
² Including Light Buses & Coaches

⁵ Member States having joined the EU since 2004 (data for Malta unavailable)

³ ANFIA estimates

⁶ AAA estimates

New light commercial vehicle registrations in the EU - 12 month trend



PROVISIONAL EU¹+EFTA COUNTRIES NEW REGISTRATION FIGURES BY MARKET NEW HEAVY COMMERCIAL VEHICLES of 16t and over²

26/01/16

	December '15	December '14	% Change	Jan-Dec '15	Jan-Dec '14	% Change
AUSTRIA	310	246	26,0%	6.715	6.300	6,6%
BELGIUM	366	343	6,7%	6.819	6.307	8,1%
BULGARIA	n.a	n.a	n.a	n.a	n.a	n.a
CROATIA	51	42	21,4%	779	759	2,6%
CYPRUS	4	2	100,0%	15	11	36,4%
CZECH REPUBLIC ³	732	543	34,8%	8.793	7.463	17,8%
DENMARK	290	331	-12,4%	4.357	3.318	31,3%
ESTONIA	16	38	-57,9%	703	706	-0,4%
FINLAND	170	165	3,0%	2.126	1.953	8,9%
FRANCE	3.365	2.867	17,4%	36.856	32.698	12,7%
GERMANY	4.079	3.790	7,6%	60.947	57.886	5,3%
GREECE	54	25	116,0%	278	212	31,1%
HUNGARY	643	546	17,8%	5.229	4.438	17,8%
IRELAND ⁴	9	3	200,0%	1.491	1.438	3,7%
ITALY ⁵	855	759	12,6%	11.896	9.496	25,3%
LATVIA	70	66	6,1%	1.383	979	41,3%
LITHUANIA ⁴	230	130	76,9%	3.609	2.117	70,5%
LUXEMBOURG ⁴	42	45	-6,7%	1.005	918	9,5%
NETHERLANDS	764	885	-13,7%	12.390	9.218	34,4%
POLAND	1.986	1.560	27,3%	20.236	15.361	31,7%
PORTUGAL	325	339	-4,1%	3.322	2.513	32,2%
ROMANIA	440	252	74,6%	5.672	3.633	56,1%
SLOVAKIA	242	222	9,0%	4.010	3.185	25,9%
SLOVENIA ⁴	136	113	20,4%	1.743	1.343	29,8%
SPAIN	1.584	1.446	9,5%	19.151	13.808	38,7%
SWEDEN	514	466	10,3%	4.827	4.711	2,5%
UNITED KINGDOM	3.562	1.807	97,1%	35.783	27.095	32,1%
EUROPEAN UNION¹	20.839	17.031	22,4%	260.135	217.866	19,4%
EU15	16.289	13.517	20,5%	207.963	177.871	16,9%
EU12¹	4.550	3.514	29,5%	52.172	39.995	30,4%
ICELAND⁴	17	13	30,8%	120	82	46,3%
NORWAY⁴	217	316	-31,3%	3.894	4.106	-5,2%
SWITZERLAND³	161	163	-1,2%	3.033	3.274	-7,4%
EFTA	395	492	-19,7%	7.047	7.462	-5,6%
EU+EFTA	21.234	17.523	21,2%	267.182	225.328	18,6%
WESTERN EUROPE (EU15+EFTA)	16.684	14.009	19,1%	215.010	185.333	16,0%

SOURCE: NATIONAL AUTOMOBILE MANUFACTURERS' ASSOCIATIONS

¹ Data for Malta unavailable

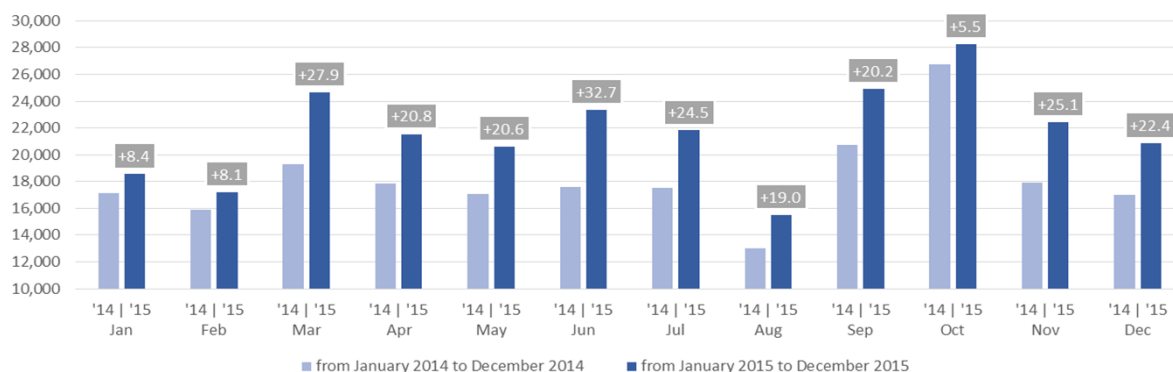
⁴ AAA estimates

² Excluding Heavy Buses & Coaches

⁵ ANFIA estimates based on vehicle registration certificates issued by the Italian Ministry of Transport

³ Heavy Commercial Vehicles of 18t and over

New heavy commercial vehicle registrations in the EU - 12 month trend



PROVISIONAL
EU¹+EFTA COUNTRIES NEW REGISTRATION FIGURES BY MARKET
NEW MEDIUM & HEAVY COMMERCIAL VEHICLES over 3.5t²

26/01/16

	December '15	December '14	% Change	Jan-Dec '15	Jan-Dec '14	% Change
AUSTRIA	353	303	16,5%	7.281	6.829	6,6%
BELGIUM	457	432	5,8%	8.327	7.801	6,7%
BULGARIA	n.a.	n.a.	n.a.	n.a.	n.a.	n.a.
CROATIA	62	47	31,9%	1.011	952	6,2%
CYPRUS	7	3	133,3%	47	26	80,8%
CZECH REPUBLIC	1.050	741	41,7%	10.732	9.054	18,5%
DENMARK	329	386	-14,8%	4.756	3.692	28,8%
ESTONIA	22	43	-48,8%	762	768	-0,8%
FINLAND	231	212	9,0%	2.707	2.560	5,7%
FRANCE	3.918	3.461	13,2%	42.783	38.784	10,3%
GERMANY	7.056	5.906	19,5%	89.744	85.971	4,4%
GREECE	57	65	-12,3%	457	383	19,3%
HUNGARY	733	587	24,9%	5.701	4.839	17,8%
IRELAND	16	4	300,0%	1.841	1.763	4,4%
ITALY ³	1.135	1.031	10,1%	15.248	12.666	20,4%
LATVIA	81	70	15,7%	1.468	1.062	38,2%
LITHUANIA ⁴	238	138	72,5%	3.715	2.251	65,0%
LUXEMBOURG	51	50	2,0%	1.076	1.013	6,2%
NETHERLANDS	848	987	-14,1%	13.767	10.347	33,1%
POLAND	2.235	1.775	25,9%	22.437	17.717	26,6%
PORTUGAL	420	408	2,9%	4.039	3.128	29,1%
ROMANIA	474	283	67,5%	5.954	3.907	52,4%
SLOVAKIA	294	254	15,7%	4.447	3.646	22,0%
SLOVENIA ⁴	157	132	18,9%	1.907	1.492	27,8%
SPAIN	1.939	1.623	19,5%	22.435	16.214	38,4%
SWEDEN	576	543	6,1%	5.457	5.251	3,9%
UNITED KINGDOM	4.576	2.606	75,6%	47.590	38.240	24,5%
EUROPEAN UNION¹	27.315	22.090	23,7%	325.689	280.356	16,2%
EU15	21.962	18.017	21,9%	267.508	234.642	14,0%
EU12¹	5.353	4.073	31,4%	58.181	45.714	27,3%
ICELAND⁴	34	19	78,9%	225	134	67,9%
NORWAY	266	387	-31,3%	5.196	5.445	-4,6%
SWITZERLAND	216	216	0,0%	3.878	4.147	-6,5%
EFTA	516	622	-17,0%	9.299	9.726	-4,4%
EU+EFTA	27.831	22.712	22,5%	334.988	290.082	15,5%
WESTERN EUROPE (EU15+EFTA)	22.478	18.639	20,6%	276.807	244.368	13,3%

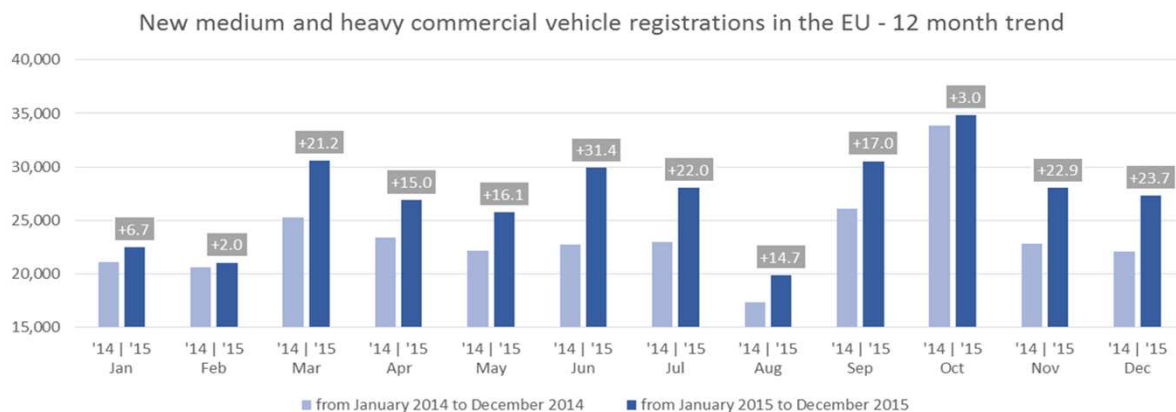
SOURCE: NATIONAL AUTOMOBILE MANUFACTURERS' ASSOCIATIONS

¹ Data for Malta unavailable

³ ANFIA estimates based on vehicle registration certificates issued by the Italian Ministry of Transport

² Excluding total Buses & Coaches over 3,5t

⁴ AAA estimates



PROVISIONAL
EU¹+EFTA COUNTRIES NEW REGISTRATION FIGURES BY MARKET
NEW MEDIUM & HEAVY BUSES & COACHES over 3.5t

26/01/16

	December '15	December '14	% Change	Jan-Dec '15	Jan-Dec '14	% Change
AUSTRIA	98	99	-1,0%	899	900	-0,1%
BELGIUM	31	101	-69,3%	923	1.142	-19,2%
BULGARIA	n.a.	n.a.	n.a.	n.a.	n.a.	n.a.
CROATIA	6	4	50,0%	122	97	25,8%
CYPRUS	n.a.	n.a.	n.a.	n.a.	n.a.	n.a.
CZECH REPUBLIC	170	234	-27,4%	1.350	1.061	27,2%
DENMARK	80	30	166,7%	532	468	13,7%
ESTONIA	34	39	-12,8%	230	190	21,1%
FINLAND	37	30	23,3%	526	691	-23,9%
FRANCE	733	551	33,0%	7.345	5.896	24,6%
GERMANY	927	831	11,6%	6.137	5.651	8,6%
GREECE	8	6	33,3%	129	175	-26,3%
HUNGARY	91	123	-26,0%	546	467	16,9%
IRELAND	32	0	n.a.	313	206	51,9%
ITALY ²	197	110	79,1%	2.419	2.135	13,3%
LATVIA	49	26	88,5%	251	208	20,7%
LITHUANIA ³	7	28	-75,0%	192	288	-33,3%
LUXEMBOURG	2	8	-75,0%	251	159	57,9%
NETHERLANDS	25	273	-90,8%	344	669	-48,6%
POLAND	212	160	32,5%	1.739	1.472	18,1%
PORTUGAL	11	19	-42,1%	254	237	7,2%
ROMANIA	128	46	178,3%	2.309	1.148	101,1%
SLOVAKIA	97	95	2,1%	379	437	-13,3%
SLOVENIA ³	21	4	425,0%	163	168	-3,0%
SPAIN	235	225	4,4%	2.617	1.896	38,0%
SWEDEN	168	103	63,1%	1.330	1.335	-0,4%
UNITED KINGDOM	594	448	32,6%	8.483	6.669	27,2%
EUROPEAN UNION¹	3.993	3.593	11,1%	39.783	33.765	17,8%
EU15	3.178	2.834	12,1%	32.502	28.229	15,1%
EU12¹	815	759	7,4%	7.281	5.536	31,5%
ICELAND³	1	38	-97,4%	95	101	-5,9%
NORWAY	194	163	19,0%	970	1.015	-4,4%
SWITZERLAND	87	94	-7,4%	745	649	14,8%
EFTA	282	295	-4,4%	1.810	1.765	2,5%
EU+EFTA	4.275	3.888	10,0%	41.593	35.530	17,1%
WESTERN EUROPE (EU15+EFTA)	3.460	3.129	10,6%	34.312	29.994	14,4%

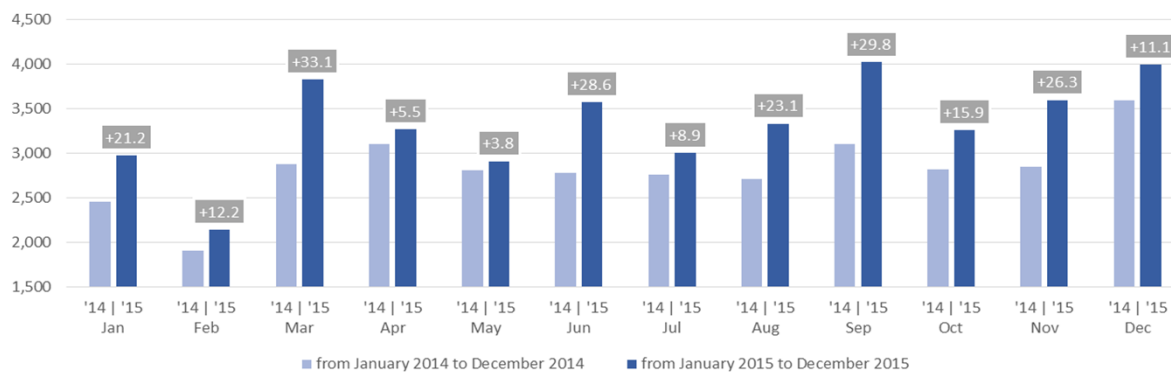
SOURCE: NATIONAL AUTOMOBILE MANUFACTURERS' ASSOCIATIONS

¹ Data for Malta unavailable

² ANFIA estimates based on vehicle registration certificates issued by the Italian Ministry of Transport

³ AAA estimates

New medium and heavy buses & coaches registrations in the EU - 12 month trend



PROVISIONAL EU¹+EFTA COUNTRIES NEW REGISTRATION FIGURES BY MARKET TOTAL NEW COMMERCIAL VEHICLES²

26/01/16

	December '15	December '14	% Change	Jan-Dec '15	Jan-Dec '14	% Change
AUSTRIA	3.039	2.647	14,8%	41.042	38.897	5,5%
BELGIUM	4.873	4.394	10,9%	70.458	62.316	13,1%
BULGARIA ³	581	385	50,9%	4.553	3.972	14,6%
CROATIA	569	322	76,7%	7.828	6.255	25,1%
CYPRUS ⁴	131	88	48,9%	1.490	1.171	27,2%
CZECH REPUBLIC	3.142	2.503	25,5%	29.213	23.280	25,5%
DENMARK	3.726	3.450	8,0%	37.767	32.658	15,6%
ESTONIA	278	281	-1,1%	4.572	3.876	18,0%
FINLAND	1.290	1.127	14,5%	14.664	13.876	5,7%
FRANCE	44.420	40.595	9,4%	427.866	415.042	3,1%
GERMANY	30.410	27.970	8,7%	333.783	319.945	4,3%
GREECE	639	714	-10,5%	6.239	5.414	15,2%
HUNGARY	3.115	2.695	15,6%	23.762	21.243	11,9%
IRELAND	284	161	76,4%	25.876	18.701	38,4%
ITALY ⁵	15.532	12.606	23,2%	149.853	132.418	13,2%
LATVIA	323	397	-18,6%	4.066	3.809	6,7%
LITHUANIA	464	328	41,5%	6.274	4.536	38,3%
LUXEMBOURG	345	327	5,5%	5.134	4.529	13,4%
NETHERLANDS	4.283	3.974	7,8%	71.828	62.777	14,4%
POLAND	8.794	7.105	23,8%	77.461	64.766	19,6%
PORTUGAL	4.159	4.149	0,2%	35.151	29.531	19,0%
ROMANIA	1.889	1.244	51,8%	19.329	14.958	29,2%
SLOVAKIA	1.111	914	21,6%	12.123	9.713	24,8%
SLOVENIA	958	633	51,3%	9.522	8.638	10,2%
SPAIN	16.646	13.534	23,0%	179.980	131.973	36,4%
SWEDEN	5.245	4.977	5,4%	51.585	48.519	6,3%
UNITED KINGDOM	35.580	29.583	20,3%	427.903	366.595	16,7%
EUROPEAN UNION¹	191.826	167.103	14,8%	2.079.322	1.849.408	12,4%
EU15	170.471	150.208	13,5%	1.879.129	1.683.191	11,6%
EU12 ¹	21.355	16.895	26,4%	200.193	166.217	20,4%
ICELAND	139	140	-0,7%	1.675	1.093	53,2%
NORWAY	4.925	3.193	54,2%	39.420	36.071	9,3%
SWITZERLAND	2.911	2.645	10,1%	35.641	33.618	6,0%
EFTA	7.975	5.978	33,4%	76.736	70.782	8,4%
EU+EFTA	199.801	173.081	15,4%	2.156.058	1.920.190	12,3%
WESTERN EUROPE (EU15+EFTA)	178.446	156.186	14,3%	1.955.865	1.753.973	11,5%

SOURCE: NATIONAL AUTOMOBILE MANUFACTURERS' ASSOCIATIONS

¹ Data for Malta unavailable

⁴ Data for Buses & Coaches unavailable

² Total Light, Medium & Heavy Commercial Vehicles and Buses & Coaches

⁵ ANFIA estimates based on vehicle registration certificates issued by the Italian Ministry of Trans

³ Data for Medium & Heavy Commercial Vehicles and Buses & Coaches unavailable

Total new commercial vehicle registrations in the EU - 12 month trend

