



ACEA

Association des
Constructeurs
Européens
d'Automobiles

Av. des Nerviens 85
B-1040 Bruxelles

Tel (32 2) 732 55 50
Fax (32 2) 738 73 10
(32 2) 738 73 11

Press Release

PROVISIONAL

EU¹ COUNTRIES REGISTRATION FIGURES BY MARKET NEW LIGHT COMMERCIAL VEHICLES up to 3.5t²

20/12/12

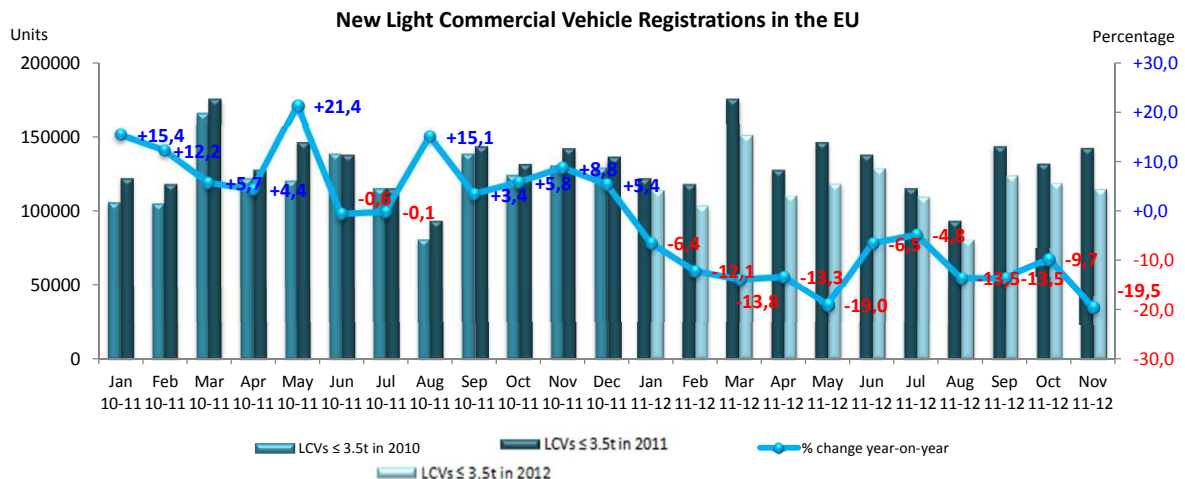
	November '12	November '11	% Change	Jan-Nov '12	Jan-Nov '11	% Change
AUSTRIA	2.482	3.289	-24,5%	29.465	29.638	-0,6%
BELGIUM	4.093	4.436	-7,7%	51.822	57.800	-10,3%
BULGARIA ⁴	326	278	17,3%	2.693	2.179	23,6%
CYPRUS	97	267	-63,7%	1.202	2.250	-46,6%
CZECH REPUBLIC	1.321	1.337	-1,2%	10.659	11.757	-9,3%
DENMARK	2.238	2.370	-5,6%	21.736	21.241	2,3%
ESTONIA	244	164	48,8%	1.964	1.801	9,1%
FINLAND	805	1.357	-40,7%	10.735	12.738	-15,7%
FRANCE	30.994	39.538	-21,6%	350.684	387.619	-9,5%
GERMANY	20.650	23.775	-13,1%	202.205	210.664	-4,0%
GREECE	320	437	-26,8%	3.257	5.985	-45,6%
HUNGARY	951	1.347	-29,4%	9.867	9.794	0,7%
IRELAND	285	305	-6,6%	10.814	11.170	-3,2%
ITALY ³	9.600	13.204	-27,3%	106.510	158.804	-32,9%
LATVIA	198	179	10,6%	2.059	1.511	36,3%
LITHUANIA	145	179	-19,0%	1.354	1.660	-18,4%
LUXEMBURG	242	287	-15,7%	3.078	3.179	-3,2%
NETHERLANDS	4.091	5.412	-24,4%	55.092	56.884	-3,2%
POLAND	3.652	4.231	-13,7%	34.918	37.226	-6,2%
PORTUGAL	1.506	3.003	-49,9%	13.633	29.443	-53,7%
ROMANIA	700	871	-19,6%	8.836	8.561	3,2%
SLOVAKIA	451	465	-3,0%	4.668	5.212	-10,4%
SLOVENIA	576	550	4,7%	5.859	5.969	-1,8%
SPAIN	6.071	8.121	-25,2%	71.105	95.701	-25,7%
SWEDEN	3.412	4.045	-15,6%	35.963	41.641	-13,6%
UNITED KINGDOM	18.975	22.684	-16,4%	223.836	241.738	-7,4%
EUROPEAN UNION¹	114.425	142.131	-19,5%	1.274.014	1.452.165	-12,3%
EU 15	105.764	132.263	-20,0%	1.189.935	1.364.245	-12,8%
EU 10	8.661	9.868	-12,2%	84.079	87.920	-4,4%
ICELAND	43	37	16,2%	396	277	43,0%
NORWAY	2.685	3.540	-24,2%	29.239	31.517	-7,2%
SWITZERLAND	2.681	2.690	-0,3%	28.735	26.098	10,1%
EFTA	5.409	6.267	-13,7%	58.370	57.892	0,8%
EU27 + EFTA	119.834	148.398	-19,2%	1.332.384	1.510.057	-11,8%
EU15 + EFTA	111.173	138.530	-19,7%	1.248.305	1.422.137	-12,2%

(¹) EU27; data for Malta currently not available.

(²) ANFIA estimate

(³) including Buses & Coaches

(⁴) estimate





ACEA

Association des
Constructeurs
Européens
d'Automobiles

Av. des Nerviens 85
B-1040 Bruxelles

Tel (32 2) 732 55 50
Fax (32 2) 738 73 10
(32 2) 738 73 11

Press Release

PROVISIONAL

EU¹ + EFTA COUNTRIES REGISTRATION FIGURES BY MARKET NEW HEAVY COMMERCIAL VEHICLES of 16t and over²

20/12/12

	November '12	November '11	% Change	Jan-Nov '12	Jan-Nov '11	% Change
AUSTRIA	417	524	-20,4%	5.750	6.226	-7,6%
BELGIUM	347	556	-37,6%	6.499	7.617	-14,7%
BULGARIA	n.a.	n.a.	n.a.	n.a.	n.a.	n.a.
CYPRUS	1	1	0,0%	52	55	-5,5%
CZECH REPUBLIC ³	509	640	-20,5%	5.223	5.748	-9,1%
DENMARK	227	289	-21,5%	3.145	3.037	3,6%
ESTONIA	74	63	17,5%	595	599	-0,7%
FINLAND	167	220	-24,1%	2.255	2.170	3,9%
FRANCE	2.857	3.424	-16,6%	33.824	36.710	-7,9%
GERMANY	4.072	5.354	-23,9%	51.147	55.689	-8,2%
GREECE	5	23	-78,3%	102	245	-58,4%
HUNGARY	332	311	6,8%	3.519	3.488	0,9%
IRELAND	23	46	-50,0%	900	783	14,9%
ITALY ⁴	679	988	-31,3%	9.343	13.153	-29,0%
LATVIA	71	78	-9,0%	1.449	1.331	8,9%
LITHUANIA ⁵	173	165	4,8%	2.543	2.529	0,6%
LUXEMBURG ⁵	61	91	-33,0%	820	1.084	-24,4%
NETHERLANDS	715	760	-5,9%	9.461	10.480	-9,7%
POLAND	1.338	1.228	9,0%	13.080	13.247	-1,3%
PORTUGAL	169	108	56,5%	1.451	1.975	-26,5%
ROMANIA	221	351	-37,0%	2.477	3.088	-19,8%
SLOVAKIA	175	210	-16,7%	2.791	2.842	-1,8%
SLOVENIA ⁵	100	99	1,0%	909	1.171	-22,4%
SPAIN	1.289	1.690	-23,7%	11.642	14.358	-18,9%
SWEDEN	480	500	-4,0%	4.483	4.673	-4,1%
UNITED KINGDOM	2.775	3.099	-10,5%	26.388	25.848	2,1%
EUROPEAN UNION¹	17.277	20.818	-17,0%	199.848	218.146	-8,4%
EUROPEAN UNION (EU15)	14.283	17.672	-19,2%	167.210	184.048	-9,1%
EU (New Members)	2.994	3.146	-4,8%	32.638	34.098	-4,3%
ICELAND	4	4	0,0%	56	33	69,7%
NORWAY ⁵	385	313	23,0%	3.709	3.006	23,4%
SWITZERLAND ³	192	261	-26,4%	2.768	3.107	-10,9%
EFTA	581	578	0,5%	6.533	6.146	6,3%
TOTAL EUROPE (EU+EFTA)	17.858	21.396	-16,5%	206.381	224.292	-8,0%
EU15+EFTA	14.864	18.250	-18,6%	173.743	190.194	-8,6%

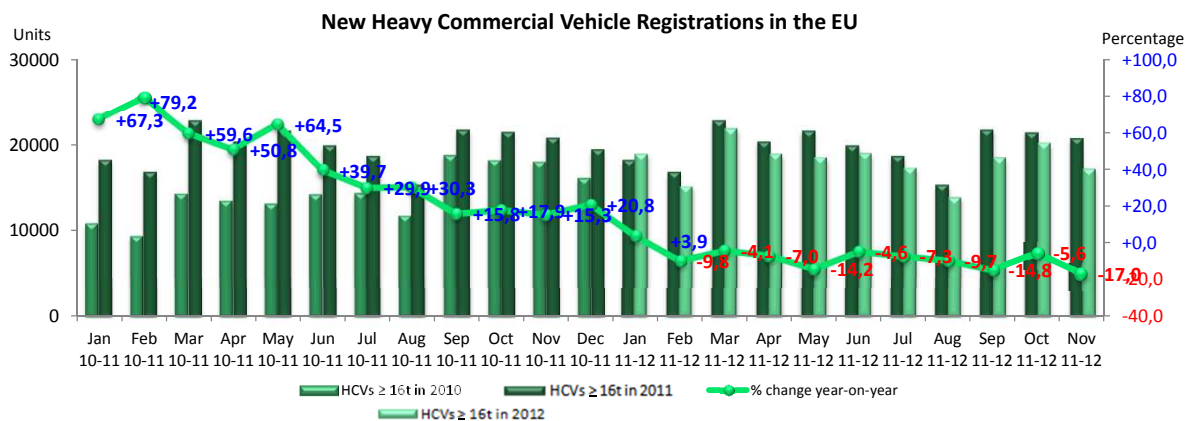
(¹) EU27; data for Malta and Bulgaria currently not available.

(²) Excluding Buses and Coaches

(³) CV ≥ 18t

(⁴) ANFIA estimate, based on data of the Italian Ministry of Transport

(⁵) estimates





ACEA

Association des
Constructeurs
Européens
d'Automobiles

Av. des Nerviens 85
B-1040 Bruxelles

Tel (32 2) 732 55 50
Fax (32 2) 738 73 10
(32 2) 738 73 11

Press Release

PROVISIONAL

EU¹ + EFTA COUNTRIES REGISTRATION FIGURES BY MARKET NEW MEDIUM & HEAVY COMMERCIAL VEHICLES over 3.5t²

20/12/12

	November '12	November '11	% Change	Jan-Nov '12	Jan-Nov '11	% Change
AUSTRIA	468	572	-18,2%	6.250	6.842	-8,7%
BELGIUM	438	703	-37,7%	8.140	9.483	-14,2%
BULGARIA	n.a.	n.a.	n.a.	n.a.	n.a.	n.a.
CYPRUS	1	6	-83,3%	70	149	-53,0%
CZECH REPUBLIC	676	778	-13,1%	6.704	7.215	-7,1%
DENMARK	262	341	-23,2%	3.484	3.415	2,0%
ESTONIA	75	69	8,7%	658	660	-0,3%
FINLAND	244	306	-20,3%	3.050	3.159	-3,5%
FRANCE	3.498	4.203	-16,8%	42.308	45.299	-6,6%
GERMANY	6.985	8.372	-16,6%	81.634	88.974	-8,2%
GREECE	30	30	0,0%	199	470	-57,7%
HUNGARY	362	350	3,4%	3.879	3.832	1,2%
IRELAND	35	57	-38,6%	1.108	1.103	0,5%
ITALY ⁴	937	1.381	-32,2%	12.941	18.439	-29,8%
LATVIA	73	90	-18,9%	1.541	1.424	8,2%
LITHUANIA ³	177	176	0,6%	2.631	2.640	-0,3%
LUXEMBURG	71	92	-22,8%	917	1.194	-23,2%
NETHERLANDS	828	893	-7,3%	10.944	12.069	-9,3%
POLAND	1.611	1.450	11,1%	15.212	15.503	-1,9%
PORTUGAL	208	144	44,4%	1.756	2.558	-31,4%
ROMANIA	239	382	-37,4%	2.693	3.427	-21,4%
SLOVAKIA	205	267	-23,2%	3.306	3.365	-1,8%
SLOVENIA ³	110	113	-2,7%	1.061	1.325	-19,9%
SPAIN	1.341	1.739	-22,9%	12.123	15.128	-19,9%
SWEDEN	560	586	-4,4%	5.131	5.381	-4,6%
UNITED KINGDOM	3.704	4.224	-12,3%	38.822	36.397	6,7%
EUROPEAN UNION¹	23.138	27.324	-15,3%	266.562	289.451	-7,9%
EUROPEAN UNION (EU15)	19.609	23.643	-17,1%	228.807	249.911	-8,4%
EU (New Members)	3.529	3.681	-4,1%	37.755	39.540	-4,5%
ICELAND	4	5	-20,0%	77	46	67,4%
NORWAY	486	403	20,6%	5.478	4.763	15,0%
SWITZERLAND	277	332	-16,6%	3.671	4.033	-9,0%
EFTA	767	740	3,6%	9.226	8.842	4,3%
TOTAL EUROPE (EU+EFTA)	23.905	28.064	-14,8%	275.788	298.293	-7,5%
EU15+EFTA	20.376	24.383	-16,4%	238.033	258.753	-8,0%

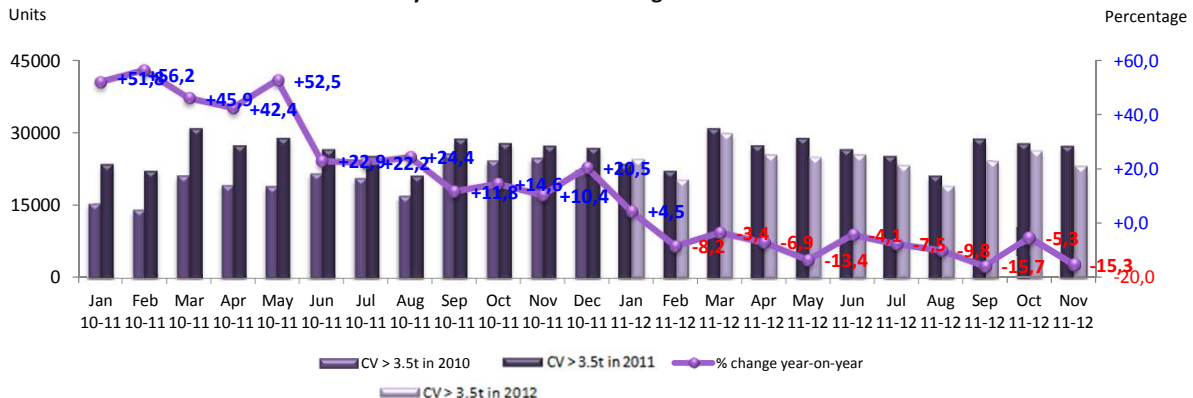
(¹) EU27; data for Malta and Bulgaria currently not available.

(²) Excluding Buses and Coaches

(³) estimates

(⁴) ANFIA estimate, based on data of the Italian Ministry of Transport

New Medium & Heavy Commercial Vehicle Registrations in the EU





ACEA

Association des
Constructeurs
Européens
d'Automobiles

Av. des Nerviens 85
B-1040 Bruxelles

Tel (32 2) 732 55 50
Fax (32 2) 738 73 10
(32 2) 738 73 11

Press Release

PROVISIONAL

EU¹ + EFTA COUNTRIES REGISTRATION FIGURES BY MARKET NEW MEDIUM & HEAVY BUSES & COACHES over 3.5t

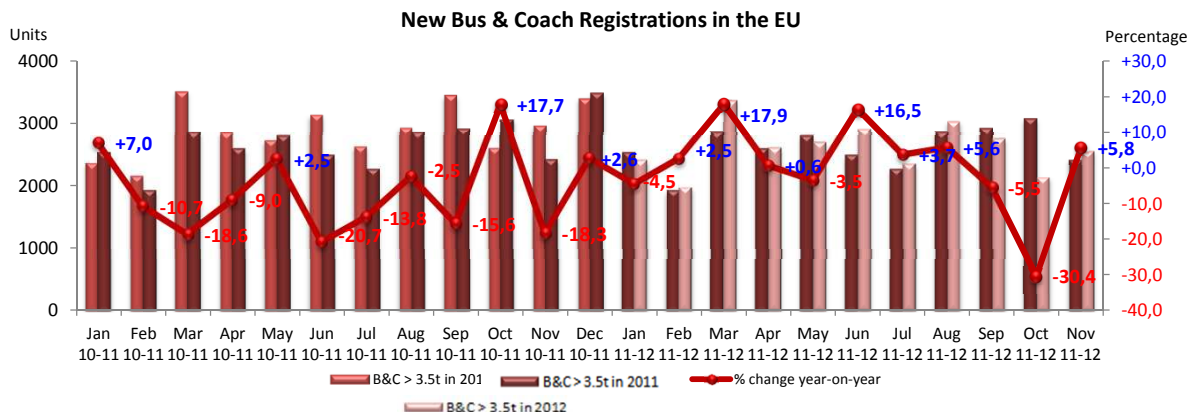
20/12/12

	November '12	November '11	% Change	Jan-Nov '12	Jan-Nov '11	% Change
AUSTRIA	42	55	-23,6%	626	516	21,3%
BELGIUM	25	13	92,3%	676	691	-2,2%
BULGARIA	n.a.	n.a.	n.a.	n.a.	n.a.	n.a.
CYPRUS	n.a.	n.a.	n.a.	n.a.	n.a.	n.a.
CZECH REPUBLIC	82	76	7,9%	655	700	-6,4%
DENMARK	63	55	14,5%	484	426	13,6%
ESTONIA	1	2	-50,0%	115	42	173,8%
FINLAND	28	14	100,0%	445	368	20,9%
FRANCE	486	350	38,9%	5.665	6.318	-10,3%
GERMANY	577	510	13,1%	4.435	4.337	2,3%
GREECE	0	0		115	71	62,0%
HUNGARY	5	7	-28,6%	44	139	-68,3%
IRELAND	3	0		236	78	202,6%
ITALY ³	177	183	-3,3%	2.049	2.888	-29,1%
LATVIA	5	6	-16,7%	82	167	-50,9%
LITHUANIA ²	6	6	0,0%	125	92	35,9%
LUXEMBURG	21	15	40,0%	156	184	-15,2%
NETHERLANDS	42	52	-19,2%	309	410	-24,6%
POLAND	150	170	-11,8%	1.167	1.305	-10,6%
PORTUGAL	3	13	-76,9%	215	321	-33,0%
ROMANIA	202	10	1920,0%	991	136	628,7%
SLOVAKIA	46	33	39,4%	262	252	4,0%
SLOVENIA ²	14	25	-44,0%	98	123	-20,3%
SPAIN	90	155	-41,9%	1.568	2.487	-37,0%
SWEDEN	103	84	22,6%	1.416	1.547	-8,5%
UNITED KINGDOM	394	584	-32,5%	6.880	5.139	33,9%
EUROPEAN UNION¹	2.565	2.418	6,1%	28.814	28.737	0,3%
EUROPEAN UNION (EU15)	2.054	2.083	-1,4%	25.275	25.781	-2,0%
EU (New Members)	511	335	52,5%	3.539	2.956	19,7%
ICELAND	5	0		68	31	119,4%
NORWAY	42	150	-72,0%	1.174	1.154	1,7%
SWITZERLAND	58	45	28,9%	464	503	-7,8%
EFTA	105	195	-46,2%	1.706	1.688	1,1%
TOTAL EUROPE (EU+EFTA)	2.670	2.613	2,2%	30.520	30.425	0,3%
EU15+EFTA	2.159	2.278	-5,2%	26.981	27.469	-1,8%

(¹) EU27; data for Bulgaria, Malta and Cyprus currently not available.

(²) estimates

(³) ANFIA estimate, based on data of the Italian Ministry of Transport





ACEA
Association des
Constructeurs
Européens
d'Automobiles

Av. des Nerviens 85
B-1040 Bruxelles

Tel (32 2) 732 55 50
Fax (32 2) 738 73 10
(32 2) 738 73 11

Press Release

PROVISIONAL

EU¹ + EFTA COUNTRIES REGISTRATION FIGURES BY MARKET TOTAL NEW COMMERCIAL VEHICLES

20/12/12

	November '12	November '11	% Change	Jan-Nov '12	Jan-Nov '11	% Change
AUSTRIA	2.992	3.916	-23,6%	36.341	36.996	-1,8%
BELGIUM	4.556	5.152	-11,6%	60.638	67.974	-10,8%
BULGARIA ⁴	326	278	17,3%	2.693	2.179	23,6%
CYPRUS ⁵	98	273	-64,1%	1.272	2.399	-47,0%
CZECH REPUBLIC	2.079	2.191	-5,1%	18.018	19.672	-8,4%
DENMARK	2.563	2.766	-7,3%	25.704	25.082	2,5%
ESTONIA	320	235	36,2%	2.737	2.503	9,3%
FINLAND	1.077	1.677	-35,8%	14.230	16.265	-12,5%
FRANCE	34.978	44.091	-20,7%	398.657	439.236	-9,2%
GERMANY	28.212	32.657	-13,6%	288.274	303.975	-5,2%
GREECE	350	467	-25,1%	3.571	6.526	-45,3%
HUNGARY	1.318	1.704	-22,7%	13.790	13.765	0,2%
IRELAND	323	362	-10,8%	12.158	12.351	-1,6%
ITALY ²	10.714	14.768	-27,5%	121.500	180.131	-32,5%
LATVIA	276	275	0,4%	3.682	3.102	18,7%
LITHUANIA	328	361	-9,1%	4.110	4.392	-6,4%
LUXEMBURG	334	394	-15,2%	4.151	4.557	-8,9%
NETHERLANDS	4.961	6.357	-22,0%	66.345	69.363	-4,4%
POLAND	5.413	5.851	-7,5%	51.297	54.034	-5,1%
PORTUGAL	1.717	3.160	-45,7%	15.604	32.322	-51,7%
ROMANIA	1.141	1.263	-9,7%	12.520	12.124	3,3%
SLOVAKIA	702	765	-8,2%	8.236	8.829	-6,7%
SLOVENIA	700	688	1,7%	7.018	7.417	-5,4%
SPAIN	7.502	10.015	-25,1%	84.796	113.316	-25,2%
SWEDEN	4.075	4.715	-13,6%	42.510	48.569	-12,5%
UNITED KINGDOM	23.073	27.492	-16,1%	269.538	283.274	-4,8%
EUROPEAN UNION¹	140.128	171.873	-18,5%	1.569.390	1.770.353	-11,4%
EUROPEAN UNION (EU15)	127.427	157.989	-19,3%	1.444.017	1.639.937	-11,9%
EU (New Members)	12.701	13.884	-8,5%	125.373	130.416	-3,9%
ICELAND	52	42	23,8%	541	354	52,8%
NORWAY	3.213	4.093	-21,5%	35.891	37.434	-4,1%
SWITZERLAND	3.016	3.067	-1,7%	32.870	30.634	7,3%
EFTA	6.281	7.202	-12,8%	69.302	68.422	1,3%
TOTAL EUROPE (EU+EFTA)	146.409	179.075	-18,2%	1.638.692	1.838.775	-10,9%
EU15+EFTA	133.708	165.191	-19,1%	1.513.319	1.708.359	-11,4%

(¹) EU27; data for Malta currently not available.

(²) ANFIA estimate, based on data of the Italian Ministry of Transport

(³) estimates

(⁴) data for MCV+HCV and MBC+HBC n.a.

(⁵) data for B&C n.a.

